

“LUCIAN BLAGA” UNIVERSITY OF SIBIU

***FACULTY OF AGRICULTURAL SCIENCES, FOOD INDUSTRY
AND ENVIRONMENTAL PROTECTION***

Doctoral Dissertation

SUMMARY

Scientific Coordinator

Prof. Univ.Dr. eng. Ovidiu Tița

Ph. D. Candidate

eng. Diana Ionela Stegăruș

SIBIU 2015



UNIUNEA EUROPEANĂ



GUVERNUL ROMÂNIEI
MINISTERUL MUNCII, FAMILIEI,
PROTECȚIEI SOCIALE ȘI
PERSOANELOR VÂRSTNICE
AMPOSDRU



Fondul Social European
POSDRU 2007-2013



Instrumente Structurale
2007-2013



MINISTERUL
EDUCAȚIEI
NAȚIONALE

OIPOSDRU



Universitatea
"Lucian Blaga"
din Sibiu

“LUCIAN BLAGA” UNIVERSITY OF SIBIU

***FACULTY OF AGRICULTURAL SCIENCES, FOOD INDUSTRY
AND ENVIRONMENTAL PROTECTION***

**DEFINING AND EVALUATING THE
AUTHENTICITY AND TYPICALITY
FROM SOME LOCAL
VARIETIES FROM CONSECRATED
WINE REGIONS**

ACKNOWLEDGEMENTS

This paper is supported by the Sectoral Operational Programme Human Resources Development (SOP HRD), financed from the European Social Fund and by the Romanian Government under the contract number POSDRU/159/1.5/S/133675

Scientific Coordinator

Prof. Univ.Dr. eng. Ovidiu Tița

Ph. D. Candidate

eng. Diana Ionela Stegăruș

SIBIU 2015

CONTENT

| | |
|---|------|
| LIST NOTATIONS AND SYMBOLS | X |
| LIST OF FIGURES | XII |
| LIST OF TABLES | XXII |
| FROM THE AUTHOR | XXIX |
| THE SCIENTIFIC OBJECTIVES OF PHD THESIS | XXX |

CHAPTER I

| | |
|--|----------|
| Current state of research on evaluating the authenticity of wines | 1 |
| 1.1. Introduction to wine | 2 |
| 1.1.1. Definition and classification of wines | 3 |
| 1.1.2. Methods of forgery in which the wine varietal | 3 |
| 1.2. Authentication methods in which the varietal wine | 4 |
| 1.2.1. The sensory evaluation of wine | 7 |
| 1.2.2. The rating profile volatiles | 7 |
| 1.2.3. The evaluation component amino acid wines | 7 |
| 1.2.4. Rating mineral profile of wines | 7 |
| 1.2.5. Rating polyphenolic components of wine | 8 |
| 1.2.6. Authentication in which the wine variety by molecular methods | 8 |
| 1.2.7. Authentication age wine | 9 |
| 1.2.8. Identification of production technology | 10 |
| 1.2.9. Authentication of special wines | 10 |
| 1.2.10. Geographic differentiation and variety by using stable isotopes | 10 |

CHAPTER II

| | |
|--|-----------|
| Eco-climateric and terroir characterization of the vineyards, inside and outside of carpathian region | 15 |
| 2.1. Vineyard Drăgășani | 16 |
| 2.1.1. Vineyard landscape Drăgășani | 16 |
| 2.1.2. Hydrography | 17 |
| 2.1.3. Climate | 17 |
| 2.1.4. Thermal regime | 17 |
| 2.1.5. Moisture Conditions | 17 |
| 2.1.6. Oenoclimatic fitness index (IAOe) | 18 |
| 2.1.7. Real heliothermic index (HI) | 18 |
| 2.1.8. Wine bioclimatic index (IBCV) | 19 |
| 2.1.9. The characteristics and cultural practices of plantation | 20 |
| 2.2. Vineyard Severin. Viticultural center Corcova | 20 |
| 2.2.1. Geographical location | 21 |
| 2.2.2. The natural | 21 |
| 2.2.3. Relief | 21 |
| 2.2.4. Hydrography | 22 |
| 2.2.5. Climate | 22 |
| 2.2.6. Oenoclimatic fitness index (IAOe) | 23 |
| 2.2.7. Real heliothermic index (HI) | 23 |
| 2.2.8. Wine bioclimatic index (IBCV) | 24 |
| 2.3. Vineyard Sâmburești | 24 |

| | |
|---|----|
| 2.3.1. Hydrography and topography vineyard Sâmburești | 25 |
| 2.3.2. Climate data and thermal regime | 25 |
| 2.3.3. Oenoclimatic fitness index (IAOe) | 25 |
| 2.3.4. Real heliothermic index (HI) | 26 |
| 2.3.5. Wine bioclimatic index (IBCV) | 26 |
| 2.4. Craiova Hills Vineyard. Segarcea viticultural center | 27 |
| 2.4.1. Relief | 27 |
| 2.4.2. Geographical location | 27 |
| 2.4.3. Soil | 27 |
| 2.4.4. Geology and lithology | 28 |
| 2.4.5. Climate | 28 |
| 2.4.6. Hydrology and hydrography | 28 |
| 2.4.7. Oenoclimatic fitness index (IAOe) | 30 |
| 2.4.8. Real heliothermic index (IHr) | 30 |
| 2.4.9. Wine bioclimatic index (IBCV) | 31 |
| 2.5. Vineyard Ștefănești | 31 |
| 2.5.1. Introduction | 31 |
| 2.5.2. Relief and soil | 32 |
| 2.5.3. Climate and hydrography | 32 |
| 2.5.4. Oenoclimatic fitness index (IAOe) | 33 |
| 2.5.5. Real heliothermic index (IHr) | 33 |
| 2.5.6. Wine bioclimatic index (IBCV) | 34 |
| 2.5.7. Grape varieties grown in the vineyard Ștefănești | 34 |
| 2.6. Vineyard Murfatlar | 35 |
| 2.6.1. Geological substrate | 35 |
| 2.6.2. Climate | 36 |
| 2.6.3. Soils | 36 |
| 2.7. Vineyard Târnavă | 36 |
| 2.7.1. Relief | 37 |
| 2.7.2. Thermal regime | 37 |
| 2.7.3. Moisture conditions | 38 |
| 2.7.4. Soil | |
| CHAPTER III | 38 |
| Knowledge regarding the technology of white and red wines | |
| 3.1. The technology for producing white wines from vineyards intra and extra-carpathian areas | 38 |
| 3.2. The technology for producing red wines from vineyards intra and extra-Carpathian areas | 43 |
| EXPERIMENTAL STUDIES | 46 |
| CHAPTER IV | |
| Materials, methods and equipment used in conducting trials | 46 |
| 4.1. Assess concentrations of polyphenols in white wines | 46 |
| 4.2. Assess concentrations of polyphenols in red wines | 46 |
| 4.3. The influence of variety on the accumulation of volatile compounds in wine (personal method optimized) | 46 |
| 4.4. The influence of climatic factors on the sensory characteristics of wine | 48 |
| 4.5. Assess concentrations of carbohydrates in white wines from intra and extra-carpathian | 48 |

| | |
|--|------------|
| areas | |
| 4.6. Rating carbohydrate concentration in red wines from intra and extra-Carpathian areas | 49 |
| 4.7. Geographic differentiation and variety by using stable isotopes of white and red wines from wine regions intra and extra-carpathian | 49 |
| 4.8. Microbiological characterization of red and white wines | 52 |
| 4.9. Improving local vineyards microorganisms genetic resources | 53 |
| 4.10. Tests on metal concentration in white and red wines | 54 |
| 4.11. Geographic differentiation and variety of wines based on the composition in phenolic compounds and heavy metals | 54 |
| CHAPTER V | 56 |
| Rating polyphenolic components in white and red wines from wine regions inside and outside of carpathian region | |
| 5.1. Assess concentrations of polyphenols in white wines | 58 |
| 5.1.1. Results and discussion | 58 |
| 5.1.2. Conclusion | 62 |
| 5.2. Assess concentrations of polyphenols in red wines | 62 |
| 5.2.1. Results and discussion | 62 |
| 5.2.2. Conclusion | 65 |
| CHAPTER VI | 66 |
| Geographic differentiation and variety through profiling of volatile compounds in white and red wines from wine regions inside and outside of carpathian region | |
| 6.1. The influence of variety on the accumulation of volatile compounds in wine | 66 |
| 6.1.1. Results and discussion | 69 |
| 6.1.2. Characterization of aromatic red wines | 80 |
| 6.1.3. Conclusion | 91 |
| 6.2. The influence of climatic factors on the sensory characteristics of wine | 92 |
| 6.2.1. Results and discussion | 93 |
| 6.2.2. Conclusion | 97 |
| CHAPTER VII | 98 |
| Assess concentrations of carbohydrates in white and red wines | |
| 7.1. Assess concentrations of carbohydrates in white wines | 99 |
| 7.1.1. Results and discussion | 99 |
| 7.1.2. Conclusion | 105 |
| 7.2. Rating carbohydrate concentration in red wines | 106 |
| 7.2.1. Results and discussion | 106 |
| 7.2.2. Conclusion | 112 |
| CHAPTER VIII | 113 |
| Geographic differentiation and variety by using stable isotopes of white and red wines from wine regions, inside and outside of carpathian region | |
| 8.1. Results and discussion | 116 |
| 8.2. Conclusion | 125 |
| CHAPTER IX | 125 |
| Microbiological particularities of white and red wines from wine regions, inside and outside of carpathian region | |
| 9.1. Microbiological characterization of red and white wines | 125 |

| | |
|---|-----|
| 9.1.1. Results and discussion | 126 |
| 9.1.2. Conclusion | 127 |
| 9.2. Improving local vineyards microorganisms Genetic Resources | 128 |
| 9.2.1. Results and discussion | 129 |
| 9.2.2. Conclusion | 130 |
| CHAPTER X | 131 |
| Rating mineral profile of white and red wines from wine regions, inside and outside of carpathian region | |
| 10.1. Tests on metal concentration in white and red wines | 131 |
| 10.1.1. Results and discussion of the concentration of metals in Romanian white wines | 131 |
| 10.1.2. Results and discussion of the concentration of metals in Romanian red wines | 139 |
| 10.1.3. Conclusion | 147 |
| 10.2. Geographic differentiation and variety of wines based on the composition in phenolic compounds and heavy metals | 148 |
| 10.2.1. Rezultate and discussions | 149 |
| 10.2.2. Conclusion | 159 |
| 10.3. Rating markers authentication features wines | 159 |
| CHAPTER XI | 161 |
| Final conclusions | |
| CHAPTER XII | 162 |
| Prospects for further research | 162 |
| REFERENCES | |
| ANEXES | a |

AUTHOR'S OPINION

This PhD thesis entitled „***DEFINING AND EVALUATING THE AUTHENTICITY AND TYPICALITY FROM SOME LOCAL VARIETIES FROM CONSECRATED WINE REGIONS***” aims to conduct a study on the authenticity of Romanian wines.

So, there were followed two main lines of research: first focused on the study of documents, the second regarding the experimental part.

Bibliographical research and experiments were carried out during the years 2012 - 2015, the being condensed in this thesis, comprising 177 pages, 14 tables and 123 figures.

The content of the thesis is structured in two parts: the first, bibliographic part includes three chapters, which present the current state of research on evaluating the authenticity of wines, the eco-climatic characterization and terroir of the vineyards of the intra and extra-Carpathian regions, the technology of the production of red and white wines from wine regions intra and extra-Carpathian and the second, the experimental part, highlights the profile of the wines from these regions, each with its specific particularities, the interdependence of eco-climatic and soil factors with specific genuine footprint. The thesis also includes annexes with chromatograms, references, notations used, a list of figures and tables that can be found in the text.

THANKS

I was assisted in this work by the Ph.D.Eng. Ovidiu Tita, the Scientific Thesis leader, whom I wholeheartedly warmest thank. With me were Mr. Ioan Ștefănescu Ph.D. director of the Institute of Cryogenics and Isotopic Separations Rm Vâlcea and colleagues in the department of Research and Development, especially Mrs. Ph.D.eng. Roxana Ionete Mrs. Phys. Ph.D. Diana Costinel, Mrs. Ph.D. Phys. Andreea Maria Iordache and Mrs. chem. Ph.D. Violeta Niculescu I wish to particularly thank them this way. Also I want to express my gratitude to the staff of the Centre for Research in Biotechnology and Food Engineering from the Lucian Blaga University of Sibiu, especially Mrs. Ph.D. Eng. Catherine Lengyel who supported me in achieving microbiological determinations, to my family and all those who helped directly or indirectly to accomplish this thesis.

I want to thank to all the produces, especially to Urucu Iustin, to the director of Vinarte, who provided me with the wine samples for this thesis. Their help was the most valuable.

THE SCIENTIFIC OBJECTIVES OF THE PHD THEISIS

Wine as a wine product must be characterized by typicality and bears the specific stamp printed by the factors underlying its implementation: variety, natural conditions and production technology (Bulancea, 2002). It is therefore necessary to study the scientific aspects that determine the origin and quality of wines and researchers' concerns must be aimed at making it an objective concept, concrete, specific.

In this context the thesis has as main objective the creation of a workable authentication system for the intra and extra regional Carpathian wines

To achieve this goal required the following steps:

In this context the thesis aims to reach the following scientific objectives:

- Evaluation of polyphenolic components in white and red wines from intra and extra Carpathian wine regions;
- Geographical and varietal differentiation through profiling of volatile compounds in white and red wines from intra and extra Carpathian wine regions;
- Geographical and varietal differentiation by using stable isotopes of white and red wines from intra and extra Carpathian wine regions;
- Improving the wine microorganisms genofund in order to obtain higher quality wines from local areas vineyards;
- Evaluation of mineral profile of white and red wines from intra and extra Carpathian wine regions;
- Geographical and varietal differentiation through the polyphenolic components and heavy metals.

OWN CONTRIBUTION

By developing this work there were identified authentication methodologies of indigenous varietal wines from central and southern Romania, based on typical aromatic profile resulting from the investigations. There were found new data on the aromatic potential of local wines, depending of the climatic and terroir conditions specific to the region, regarding the

establishment of the wine bouquet. There was given scientific data regarding the aromatic and olfactory profile of the wines to identify its typicality. There were isolated and characterized indigenous yeasts from typical areas in order to create a bank of native selected yeasts, but also was established the influence of trace elements on qualitative characteristics of different types of wines, for the first time.

EXPERIMENTAL PART

THE EVALUATION OF THE POLYPHENOL COMPONENT IN WHITE AND RED WINES FROM INTRA AND EXTRA CARPATIAN WINE REGIONS

Evaluation of the concentrations of polyphenols in white wines

Materials and methods

White wines from vineyards from Ștefănești, Drăgășani, Sâmburești, Corcova, Severin, Murfatlar, Ploiești (Halewood Wineries), Jidvei, Sebeș, 2011, 2012, 2013 harvests.

Quantitative evaluation of polyphenols was performed through the Folin-Ciocalteu modified method

Results and discussion

Assessing the amount of polyphenols in white wines Sauvignon Blanc, Chardonnay and Italian Riesling from vineyards Ștefănești, Drăgășani Sâmburești, Corcova, Severin, Murfatlar, Ploiesti (Halewood Cellars) Jidvei and Sebes, the harvest of 2011, 2012, 2013 is visible in Figure 1.

Conclusion

White wines from the varieties Sauvignon Blanc, Chardonnay and Riesling Italian present a wide variety of polyphenols, values which can be 3-4 times higher one from another.

Determined values, put in order, lead to the following classification:

Corcova>Severin>Drăgășani>Ștefănești>Sâmburești>Murfatlar>Jidvei>Ploiești>Sebeș

The results have shown that polyphenols are indispensable components in wines, their concentration is mostly related to the provenance of the wine and not necessarily of its kind.

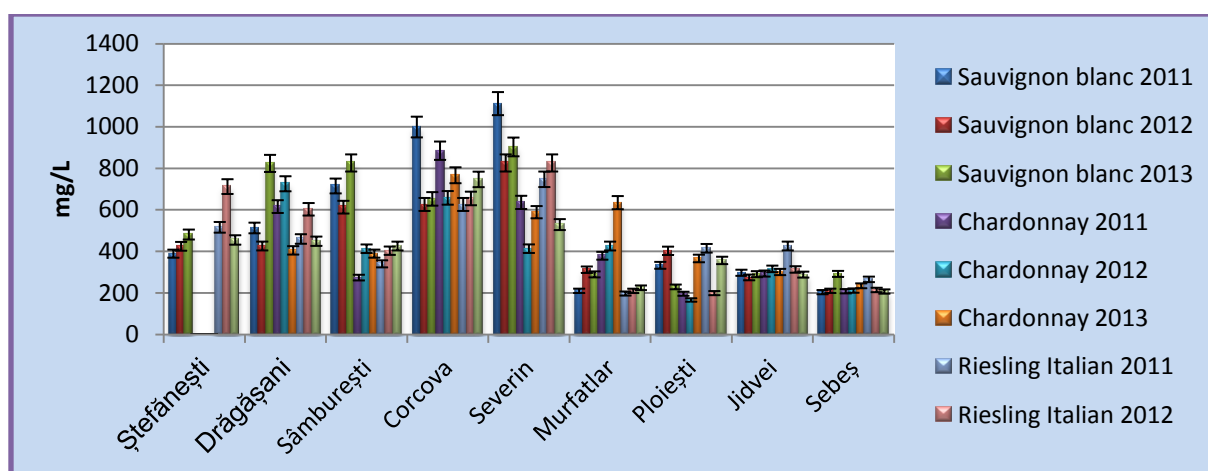


Figure 1. Assessing the amount of polyphenols in white wines harvest years 2011, 2012 and 2013

The evaluation of the concentrations of polyphenols in red wines

Materials and methods

Red wines from the vineyards Ștefănești, Drăgășani, Sâmburești, Corcova, Severin, Murfatlar, Ploiești (Halewood Wineries) and Jidvei, harvest of 2011, 2012, 2013.

Results and discussion

Red wines show a much higher concentration of polyphenols than white wines.

These values exceed 4-6 times the amounts determined in white wines, which is normal because of high concentrations of anthocyanins, which give the red wines not only the sensory attributes but also the red color. Assessing the amount of polyphenols in red wine Cabernet Sauvignon, Pinot Noir, Merlot from vineyards Ștefănești, Drăgășani Sâmburești, Corcova, Severin, Murfatlar, Ploiesti (Halewood Cellars) and Jidvei harvest years 2011, 2012, 2013 is shown in Figure 2.

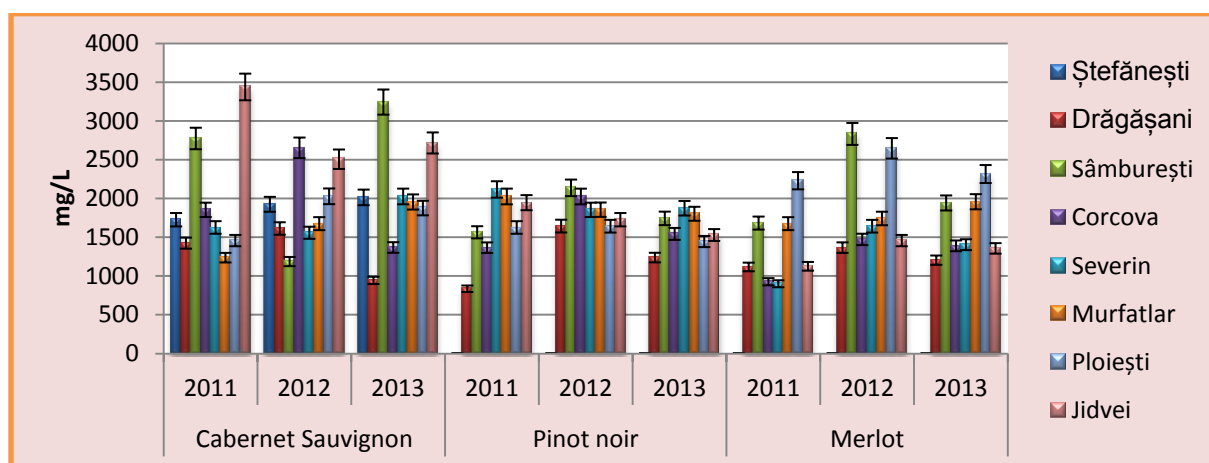


Figure 2. Assessing the amount of polyphenols in red wine harvest of 2011, 2012, 2013

Conclusion

Red wines from the vineyards Ștefănești, Drăgășani, Sâmburești, Corcova, Severin, Murfatlar, Ploiești (Halewood Wineries) and Jidvei, harvest of 2011, 2012, 2013 showed significant amounts of polyphenols, they contribute to color formation, stability and sensory characteristics thereof. From the results obtained we can say that Pinot Noir has a lower astringency, same as Merlot. Cabernet Sauvignon wines from Sâmburești and Jidvei may be tougher characters, astringent, compared with those from Corcova and Murfatlar, where values are lower in polyphenol. All these elements contribute to establishing benchmarks in their authentication process.

GEOGRAPHICAL AND VARIETAL DIFFERENTIATION THROUGH PROFILING OF VOLATILE COMPOUNDS IN WHITE AND RED WINES FROM INTRA AND EXTRA CARPATHIAN WINE REGIONS

The influence of variety on the accumulation of volatile compounds in wine

Materials and methods

Red and white wine varieties: Sauvignon Blanc, Chardonnay, Italian Riesling, Cabernet Sauvignon, Pinot Noir and Merlot harvest years 2011, 2012 and 2013 from Oltenia:

Ștefănești, Drăgășani, Sâmburești, Corcova, Severin; Dobrogea: Murfatlar; Muntenia: Wineries Halewood/Ploiești; Transilvania: Jidvei and Sebeș.

The samples taken were analyzed by the GC / FID system (gas chromatography coupled with flame ionization detector using the Headspace method in advance.

The system included Varian chromatograph gas coupled with Varian 240 MS, mass spectrometer model (Varian Inc - California, SUA), equipped with a capillary column TG-WAXMS Thermo Scientific (Waltham, MA USA) (60m x 0.32 x 0.25 pm).

Results and discussions

Characterization of aromatic white wines from intra and extra-Carpathian regions

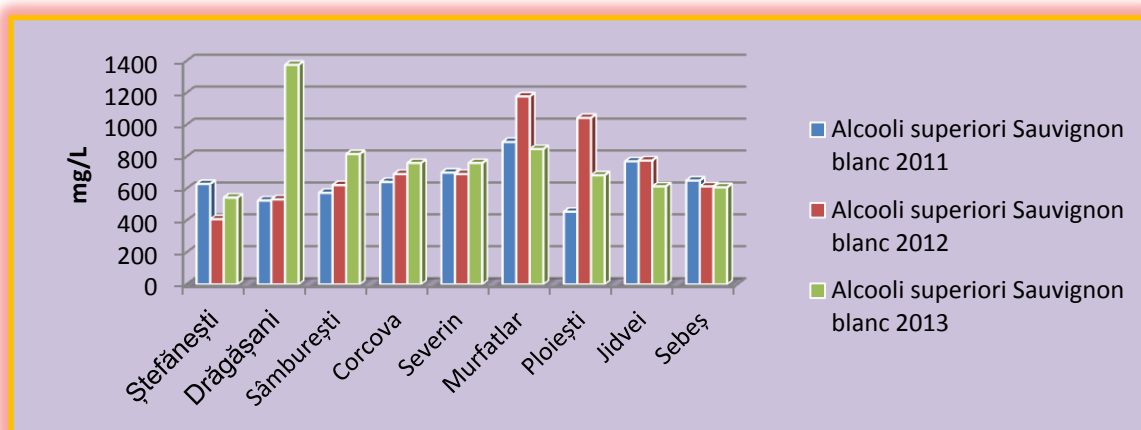


Figure 3. Evaluation of the content of higher alcohols in white wines from Sauvignon blanc Ștefănești Drăgășani Sâmburești, Corcova, Severin, Murfatlar, Halewood Cellars / Ploiesti, Jidvei and Sebes, the harvest of 2011, 2012, 2013

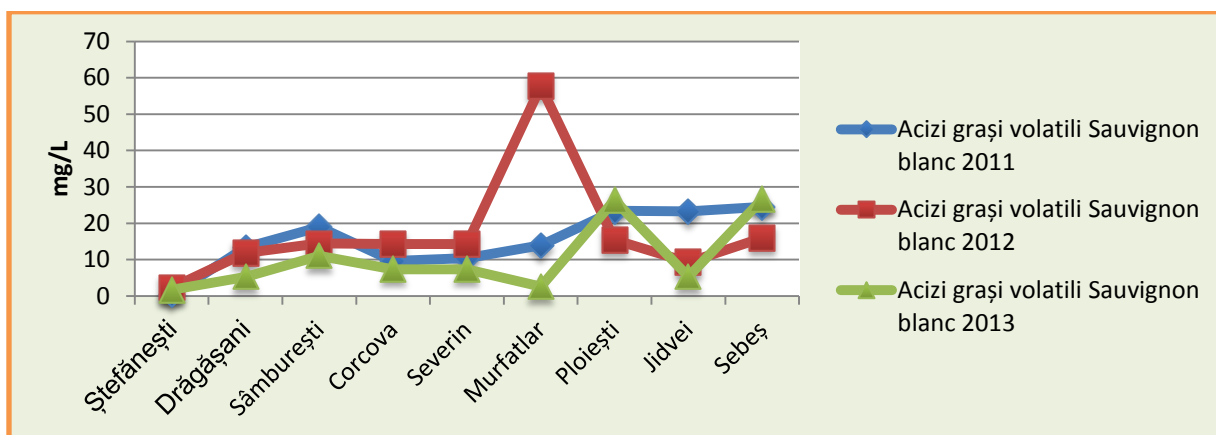


Figure 4. Evaluation of the content of volatile fatty acids in white wines from Sauvignon blanc Ștefănești Drăgășani Sâmburești, Corcova, Severin, Murfatlar, Halewood Cellars / Ploiesti, Jidvei and Sebes, the harvest of 2011, 2012, 2013

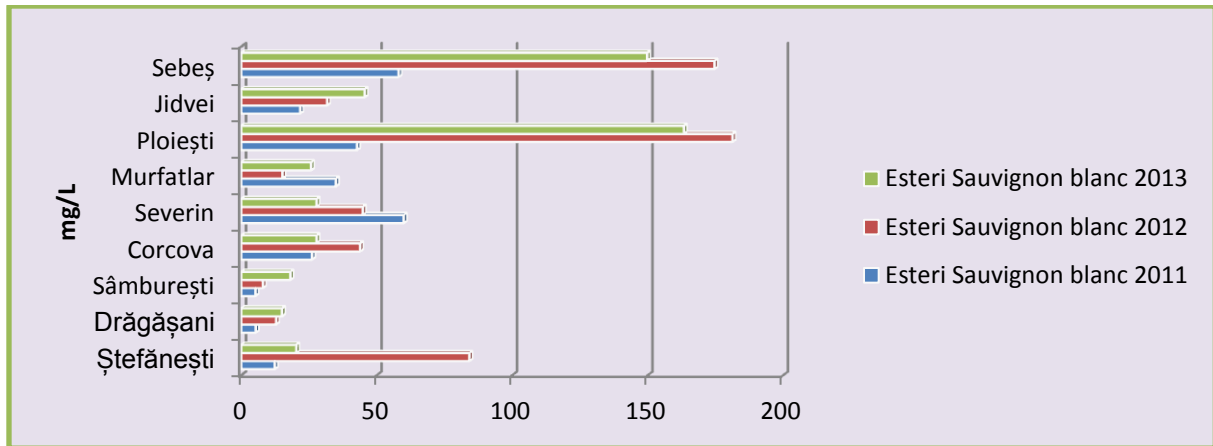


Figure 5. Evaluation of ester content in white wines from Sauvignon blanc Ștefănești Drăgășani Sâmburești, Corcova, Severin, Murfatlar, Halewood Cellars / Ploiesti, Jidvei and Sebes, the harvest of 2011, 2012, 2013

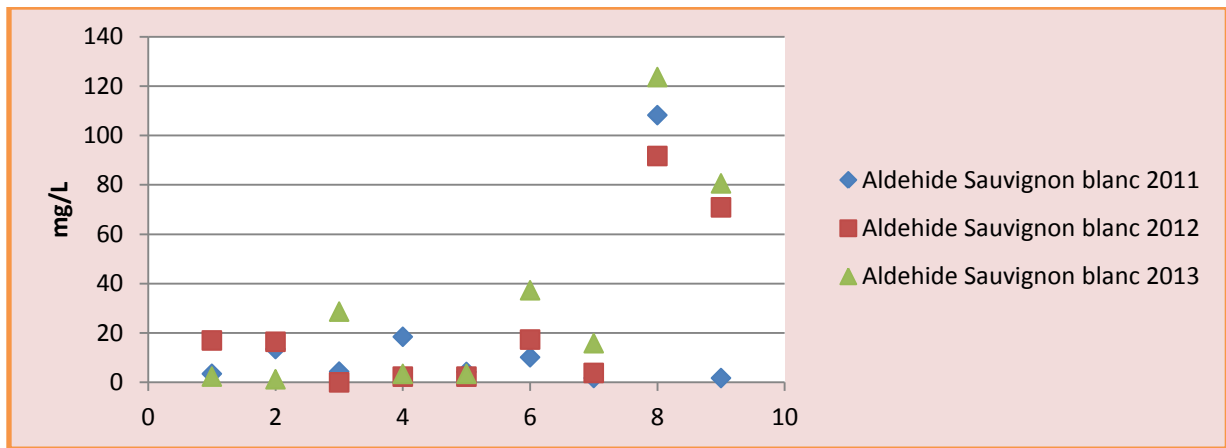


Figure 6. Rating aldehyde content in white wines from Sauvignon blanc Ștefănești Drăgășani Sâmburești, Corcova, Severin, Murfatlar, Halewood Cellars / Ploiesti, Jidvei and Sebes, the harvest of 2011, 2012, 2013

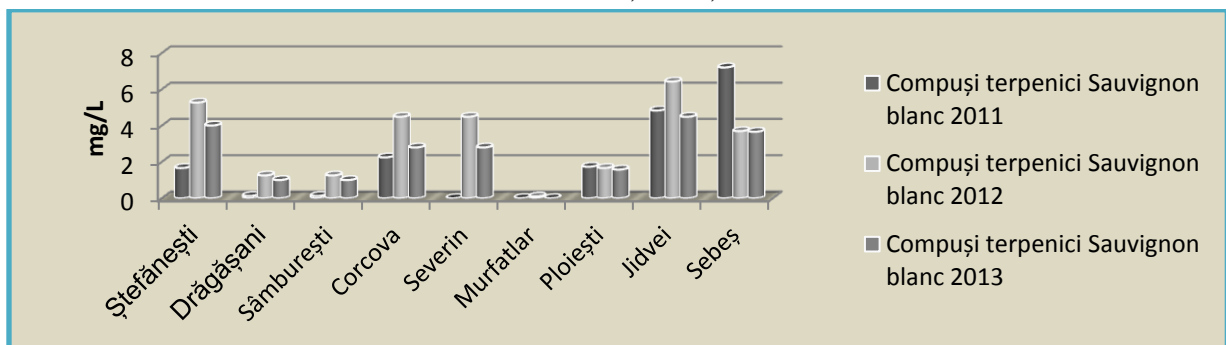


Figure 7. Assessing the terpene compounds in white wines from Sauvignon blanc Ștefănești Drăgășani Sâmburești, Corcova, Severin, Murfatlar, Halewood Cellars / Ploiesti, Jidvei and Sebes, crop years 2011, 2012, 2013

Conclusion

Summarizing the results, we can say that white wines from Dobrogea present the highest level of higher alcohols, followed by those from Muntenia, then the ones from Oltenia, and the

lowest are found in wines from Transylvania. Regarding the volatile fatty acids, these are found in significant quantities in the wines from Dobrogea, followed by those in Muntenia and Transylvania, last place is occupied by those from Oltenia. The ones that give the most substantial flavors are found in higher amounts in white wines from Muntenia and Transylvania, followed by those coming from Oltenia and Dobrogea.

Aldehydes present similar values in Oltenia, Dobrogea and Muntenia, and significantly higher in Transylvania.

Terpene compounds, which give the flavor of muscat, rose, floral wine are found in higher amounts in samples of Transylvania, Muntenia, Oltenia and very low in Dobrogea. Regarding the red wines, the most significant amounts of higher alcohols are in samples from Dobrogea, Oltenia followed by those from Muntenia and Transylvania.

Volatile fatty acids present very similar values in wines from Oltenia, Dobrogea, Muntenia and significantly superior values in wines from Transylvania. Wines from Dobrogea and Muntenia present the most significant amount of esters, followed closely by those in Transylvania; the lowest content of esters have the ones from Oltenia.

The aldehydes were identified in high concentrations in red wines from Transylvania, followed by those in Oltenia, Dobrogea and Muntenia, and terpene compounds were found in wines from Muntenia and Transylvania. Lowest terpene compounds quantity was identified in red wines from Dobrogea. It can be said that depending on the region which these wines are from, although it is the same variety, their aromatic structure sometimes differ greatly.

THE EVALUATION OF THE CONCENTRATION OF CARBOHIDRATES IN WHITE AND RED WINES FROM INTRA AND EXTRA CARPATHIAN WINE REGIONS

Materials and methods

White wines from the vineyards of Ștefănești Drăgășani Sâmburești, Corcova, Severin, Murfatlar, Ploiesti (Halewood Cellars) Jidvei harvest of 2011, 2012, 2013.

Carbohydrates were determined by (HPLC-IR) the high performance liquid chromatography method coupled with refractive index detector. The HPLC system that was used to determine (the Shimadzu model) comprises LC-10AD pump, DGU-14A degasser, autosampler for SIL-10AV VP, refractive index detector RID-10A, 30°C temperature thermostat regulator CTO-10AS VP of separation column Alltech (Altima Amino 100A 5 μm, containing modified amino silica gel, 250 mm x 4.6 mm). The wines were injected only with a previous Millipore 0.45 μm filtration.

The mobile phase was represented by acetonitrile / water (80:20 v / v) with a flow rate of 1.3 ml / min.

The volume of injection was 10 μl and the column temperature was maintained at 30 ° C.

Conclusion

- The sugars found in the studied white wines, put them in the dry and semi-dry category, the resulting values can be included in the standard areas;
- Glucose concentrations which are substantial compared to the fructose, but added together they can characterize a wine;

- The concentration of sugars, depends on the technology used and also on the yeasts involved in the alcoholic fermentation;
- Changes in sugar values for the same sort of wine, in different years, can be explained by climatic conditions specific to the ripening and maturation period of the grapes, precipitation and temperature variations;
- The identified concentrations of trehalose, can be explained by the fact that this is a backup sugar, which was not completely consumed by the yeast in the stum, its degradation being partial (higher concentrations in the case of musts rich in carbohydrates, lower in those with lower values of carbohydrates);
- Glycerol ranges from 5 to 15 g / L in wine, according to the harvest condition, type of wine or the used SO₂ content (Târdea, 2007). The values obtained in this study correspond to those in specialty literature;
- The sugars found in the red wines we studied, put them in the dry and semi-dry category, the resulting values can be included in the standard areas;
- Glucose shows close values to fructose, as a result of biochemical processes occurring during alcoholic fermentation;
- The concentration of sugars, depends on the technology used and also the yeasts involved in the alcoholic fermentation;
- Changes in sugar values for the same sort of wine, in different years, can be explained by climatic conditions specific to the ripening and maturation period of the grapes, precipitation and temperature variations;
- The identified concentrations of trehalose, can be explained by the fact that this is a backup sugar, which was not completely consumed by the yeast in the stum;
- Glycerol ranges from 5 to 15 g / L in wine, according to the harvest condition, type of wine or the used SO₂ content (Târdea, 2007). The values obtained in this study correspond to those in specialty literature, with few exceptions that may be insignificant;
- Red wines Cabernet Sauvignon from Murfatlar, Pinot Noir from Jidvei and Merlot from Murfatlar had the most significant amounts of glycerol, so from the sensory point of view they can be characterized as unctuous wine, full bodied and with a sweet taste effect;
- The most significant amount of glycerol, during the study period and in terms of origin are obtained by Pinot Noir wines.

GEOGRAPHICAL AND VARIETAL DIFFERENTIATION BY USING STABLE ISOTOPES OF WHITE AND RED WINES FROM INTRA AND EXTRA CARPATHIAN WINE

The specific procedure through mass spectrometry *IRMS*

Mass spectrometers-type *IRMS* are modern appliances that are usually registered an ionic current (proportional to the number of ions), in the form of a spectrum, depending on the mass of ions and their relative abundance (concentration in percent). The principle of mass spectrometry consists in the ionization of the sample by electron bombardment in high vacuum, focusing and sending ions and fragmentation products in an analyzer (depending on the ratio of the mass / charge by applying a magnetic and / or electrically), then collecting and measuring quantities of each ion select by a detector.

Results and discussions

Isotopic fingerprinting wines involves several aspects, such as determining the geographical origin, year of harvest, wine grower and quality. It is therefore necessary that the proof of authenticity of the wine to be based on specific parameters of that origin does not change during vinification or are difficult to forge namely stable isotopes: oxygen-18 and carbon 13. The statistical analysis of the principal component (PCA) were considered fingerprints isotope (carbon 13 and oxygen 18) of wines produced in vintage years 2011-2013 the wine areas of Jidvei Drăgășani Sâmburești, Ștefănești hills of Dobrogea, Corcova , Sebes related to multi-element analysis (heavy metals content), noting discrimination samples after harvest year after the viticultural area.

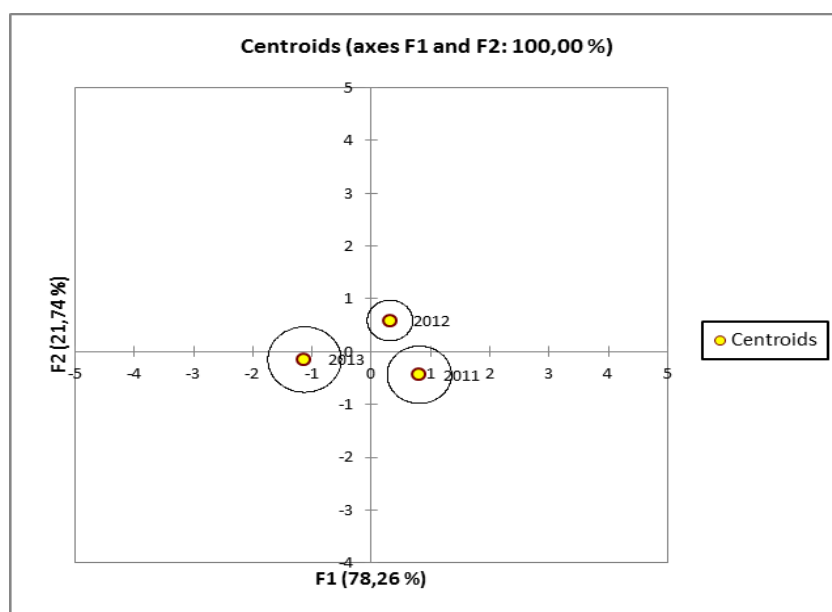


Figure 8. Discrimination of the Romanian wines produced in the years 2011, 2012 and 2013 using principal component statistical analysis (PCA)

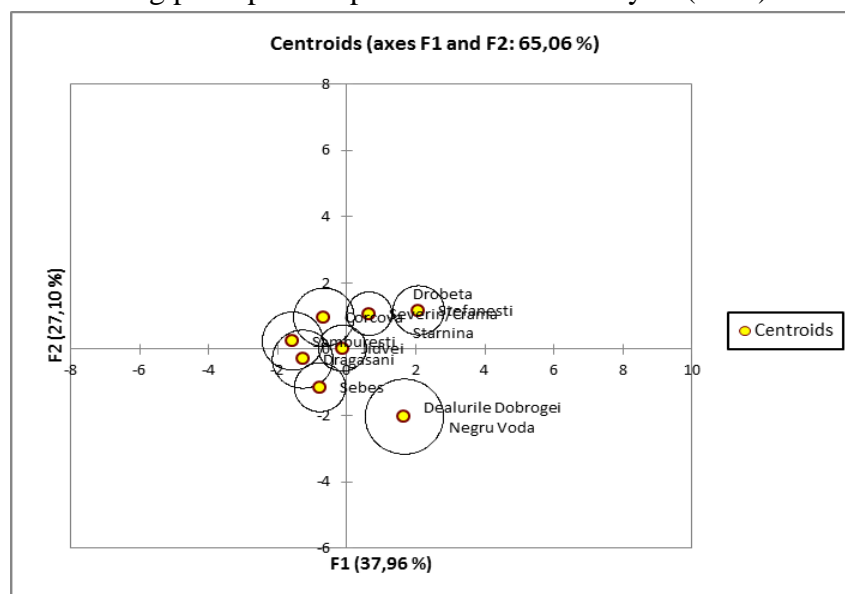


Figure 9. Discrimination of the Romanian wines after the viticultural area using principal component statistical analysis (PCA)

Conclusion

In this chapter it is demonstrated that determination of natural composition in stable isotopes (Carbon 13 and oxygen 18) of a wine, coupled with multi element analyzes, (eg. the determination of heavy metals), represents an efficient application of analytical chemistry in the authentication of Romanian wines, and establishing and widening of a database with these values represents a priority at national and international levels.

The results obtained by these studies lead to a database of wine authentication in the studied regions.

MICROBIOLOGICAL FEATURES OF WHITE AND RED WINES FROM THE INTRA AND EXTRA CARPATHIAN WINE REGIONS

Improving the genofund of autochthonous grapevine microorganisms

Materials and methods

- Grape coming from vineyards Ciumbrud, Drăgășani Jidvei Recea Segarcea;
- Fermenter with a volume of 2 L equipped with:
- O₂, CO₂, pH, temperature, biomass, conductivity sensors;
- Double jacket, water recirculation pump, thermostat bath;
- Fermentation temperature was set at 18⁰C;
- The period of the yeast harvest: daily, for 10 days starting with the third day of fermentation;
- The speed of the fermenter blade was set at 200 rev / min;
- API 20C AUX test, Biomerieux, France for identifying yeasts;
- M1 culture environment MMA (agar malt mash Sharlau, Barcelona), YPG (yeast-peptone-glucose), sucrose 5%, ammonium sulfate 0.5 mg / l;
- M2- culture environment MMA (agar malt mash Sharlau, Barcelona), YPG (yeast-peptone-glucose), sucrose 10%, ammonium sulfate 0.5 mg / l;
- M3- culture environment MMA (agar malt mash Sharlau, Barcelona), YPG (yeast-peptone-glucose), sucrose 15%, ammonium sulfate 0.5 mg / l;
- Blades, blades, Keyance fluorescence microscope, Biozero.

Results and discussions

After carrying out the processes of fermentation and harvesting of successive samples could be isolated and identified by testing the API 20C AUX, 125 strains of the yeast *Saccharomyces cerevisiae*, which have been denoted by the initial area of origin followed by numbers from 1 to 25. strains subsequently seeded nutrient medium described above were then selected based on cultural aspects, cell size. Since culturally these yeasts has a light color with a glossy cream for bombs. Obsevând microscopic dimensions were selected only those strains that showed maximum values.

Thus remained in question following strains: C12, C16, C24, D13, D15, D19, J7, J11, J21, R5, R10, R18, S14, S15, S25.

Conclusion

Isolated strains can lead to the formation of a library of culture derived only from domestic strains to preserve the typicality and authenticity of variety in our country. By isolating the wine yeast from indigenous varieties and improving their biotech qualities, by optimizing culture environments we can obtain starter cultures, typical to the areas of origin. The results lead to the recommendation for using these strains in the winemaking processes, to eliminate the standardization of taste, caused by the imported strains.

THE EVALUATION OF MINERAL PROFILE OF WHITE AND RED WINES FROM INTRA AND EXTRA CARPATHIAN WINE REGIONS

Tests on metal concentration in white and red wines

Materials and methods

For this study there have been selected samples of white wine Sauvignon Blanc, Chardonnay and Italian Riesling, Royal Fetească, and samples of red wine Cabernet Sauvignon, Merlot, Burgund and Pinot Noir, harvests in the years 2011, 2012, 2013 originating in the following areas: Ștefănești, Drăgășani, Sâmburești, Corcova, Severin, Halewood Cellars. For the selected samples were found the following metals: cadmium, lead, manganese, nickel, zinc, aluminum, barium, copper, with authorized methods by laboratory of physical and chemical determinations of ICSI Vâlcea, using atomic absorption spectrometry with graphite furnace ICP-MS VARIAN 820. Ultra-pure water was used, HNO₃ 69% (w/v), concentrated with HF and HCl, and purified water with resistivity of maximum 18,2 MΩcm⁻¹, obtained from a Millipore Milli-Q (Bedford, MA, USA) system. A small amount of sample or reference solution is placed within the hollow graphite tube. It is heated to a temperature program to remove, burn, impurities. For quantitative measurements, there was obtained a calibration curve for each element.

By benchmarking the relative abundance of the elements in wine by region of origin, their tendency is classification:

for wines produced in Murfatlar and Jidvei Cd < Pb < Ni < Cr < With < Zn

for wines produced in Receaș Cd < Pb < Ni < Cr < With < Zn

If we compare the relative abundance of elements depending on the variety of wines is observed the following trend:

for wine Chardonnay: Cd < Pb < Ni < Cr < Cu < Zn

for wine Muscat Ottonel: Cd < Cr < Pb < Ni < Cu < Zn

for Pinot Noir: Cd < Pb < Ni < Cr < Zn < Cu

This classification is specific only to this study can not be generalized because the concentrations of wine is influenced by many factors including inter alia the area of origin, type of soil, grape variety, climate (terroir) and oenological practices and wine.

The results correspond to those reported in a previous study on wines from regions Dobrogea / Murfatlar, Muntenia / Valley Călugărească and Moldova.

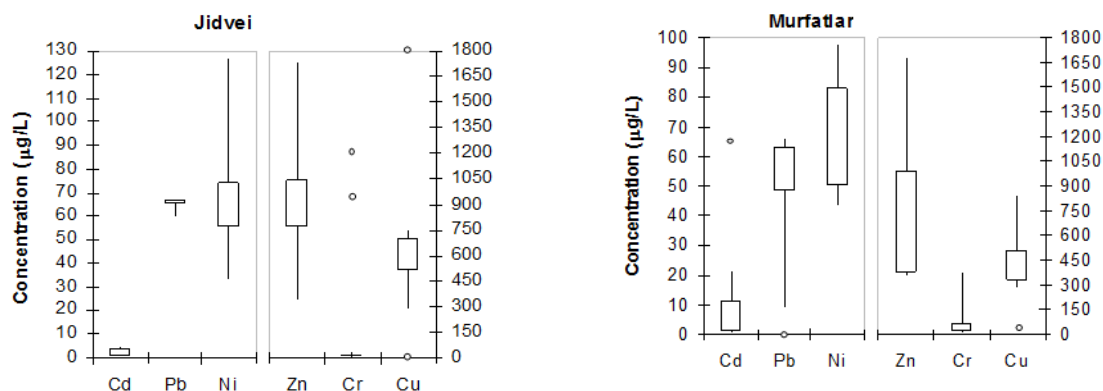


Figure 10. Global overview concentrations (ug/L) elements in wines produced in the wine regions considered in this study.

Conclusion

- The method for determination of metals using atomic absorption spectrometry with graphite furnace ICP-MS VARIAN 820 leads to very precise results regarding micrograms;
- The nickel level showed in this study does not exceed the maximums allowed by regulations, even if there have been reported significant fluctuations between vineyards and the studied various wines, the maximum values recorded for white wines were at Halewood Cellars and for the red wines at Sâmburești;
- Copper and zinc are essential micronutrients for the human body, and the concentrations detected in studied wines are benefic from this point of view, without exceeding normal limits. Concentration peaks in white wines were found at Severin and Drăgășani and for red wines at Sâmburești;
- There is no evidence to lead to soil contamination hypothesis in any of vineyards, even if values fall within the generous margins;
- The highest concentration of cadmium is found in white wines at Sâmburești, and red wines ones at Dragasani, but doesn't exceed the maximum accepted limit imposed by OIV;
- The highest concentration of plumbum in white wines was found at Dragasani, and in the red wines at Corcova, without exceeding the maximum imposed by law;
- The manganese was found with the highest concentration in white wines at Dragasani, and in red wines at Sâmburești;
- The maximum concentration of aluminum for white and red wines was found at Halewood Cellars, without providing a negative report to the wine;
- Barriers reported the highest concentration for white wines at Halewood Cellars, while red wines reported the highest concentration at la Severin.

ASSESSMENT IN AUTHENTICATION CHARACTERISTIC MARKER WINES

Identify specific components of the area from which the wine has a major significance for its authentication, precisely because constituents are typical. The concentration of polyphenols

depends on the variety, ripening conditions of grapes, wine applied technologies and in particular climate. Popularity presents the practices vine specific works and splashing, and soil composition and groundwater. Additions of alcohol in wine, sugar or glycerol can be easily detected by isotopic fingerprinting, a method increasingly used in laboratories. Authentication is an important goal geographical origin as growing zones have a known reputation, and manufacturers are tempted to sell cheap wines under a false name. The vine grows in different geographical areas so that the grapes, even if they are of the same variety has different characteristics. Isotopic fingerprinting lead to determine precisely the area of origin wines because it prints a typical configuration, which can lead to differentiation. The content of heavy metals is also a key element in authentication of wines by the very fact that they can come from life itself (geographical), and the use of poor quality or inappropriate containers. The concentration of minerals and trace elements that are specific to a wine by its color to be involved in, present peculiarities relevant compositional and discriminatory. Contributes flavor compounds relevant to the authenticity of a wine through their concentration but also their variety. Each variety is specific to a set of flavor compounds that lead to differentiation, and there are specific compounds that only a segment of wines. This difference may result from the concentration of terpene compounds, and aromatic compounds in flavored varieties. International law provides for the harmonization and improvement of analytical methods to identify fraud and improve food control by establishing physicochemical characteristics consistent with the natural potential, restriction or banning of additions of various elements, setting the maximum in terms of the concentration of toxic compounds in wine, but and identify them according to the label. The figure 121 stands mandatory requirements in determining the authenticity of a wine based on the concentration of carbohydrates, polyphenols, flavor compounds, fingerprinting isotopic ethanol and water, the concentration of heavy metals and distinguishing elements of the process, in particular the use of yeasts and enzymes. Wine production technologies allow the use of selected yeasts and enzymes that lead ultimately to the specific characteristics of each area separately, but more relevant is that the effervescent authenticity can distinguish them from the field of potential counterfeits.

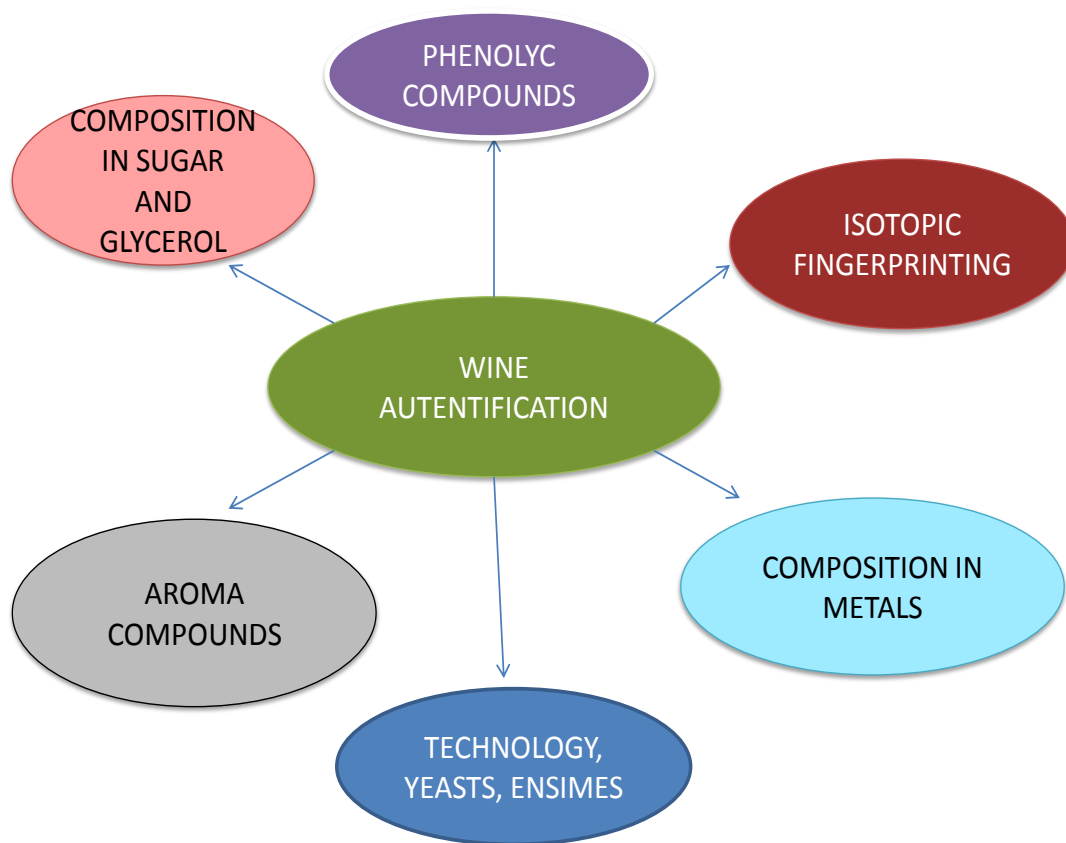


Figure 11. Elements of authentication of wines

FINAL CONCLUSIONS

- White wines from southwest presents the highest values of polyphenols, while those in the lowest center. The concentration of polyphenols is linked largely to the provenance of the wine and not necessarily of its kind.
- White wines from Dobrogea representing the highest level of higher alcohols, followed by those from Muntenia, Oltenia and then the, and the lowest are found in wines from Transylvania.
- Regarding these volatile fatty acids are found in significant quantities in the wines from Dobrogea, followed by those in Wallachia and Transylvania and in last place is occupied by those from Oltenia.
- Esters, which gives the most substantial flavors are found in higher amounts in white wines from Wallachia and Transylvania, followed by Oltenia and Dobrogea those coming from.
- Aldehydes present similar values in Oltenia, Dobrogea and Muntenia, and significantly higher in Transylvania. Terpene compounds, which gives the flavor of Muscat, rose, floral wine are found in higher amounts in samples of Transilvania, Muntenia, Oltenia and Dobrogea in the very low.

- Red wines they contain significant amounts of higher alcohols in the samples of Dobrogea, Oltenia followed by those from Wallachia and Transylvania.
 - Volatile fatty acids present very similar values in wines from Oltenia, Dobrogea, Muntenia and significantly superior wines from Transylvania.
 - Dobrogea and Muntenia wines from presenting the most significant amount of esters, followed closely by those in Transylvania and the lowest content of esters that from Oltenia.
 - Aldehydes were identified in high concentrations in red wines from Transylvania, followed by those in Oltenia, Dobrogea and Muntenia and terpene compounds in wines from Wallachia and Transylvania.
 - The amount of terpene compounds lowest identified in red wines from Dobrogea.
 - It can be said that depending on the region from which these wines, although it is the same variety, their structure aromatic sometimes differ greatly.
 - Sugars determined red wines studied them within the category of dry and semi-dry area resulting values were included in the current standards, glucose, fructose actually showing similar values resulting from biochemical processes that occur during alcoholic fermentation.
 - variația sugar values for the same sort of wine in different years can be explained by climatic conditions specific ripening and maturation of grapes, precipitation and temperature variations thereof.
 - Identify stable isotopes allow the authenticity of the wines studied by setting their botanical origin and geographical markers.
 - Did not observe any event leading to contamination of the soil with heavy metals in any one of the vineyard.
 - Is recommended strains isolated from local strains in winemaking processes so as to preserve local varieties typicality and authenticity.
- Best correlations necessary varietal wines discrimination experienced phenolic compounds (gallic acid, catechin, epicatechin, rutin, quercetin and resveratrol) in accordance with specific micronutrients area of origin of the variety.

PERSPECTIVES OF FURTHER RESEARCH

- The research can be continued on the accumulation of phenolic compounds in certain varieties;
- There can be used some other technical methods in order to improve the production of aromatic and semi aromatic wines;
- Research can continue on the same topic approaching other varieties specific to these vineyards;
- The study can continue in the field of aroma compounds which are found in nanogram quantities, and try to improve GC-MS procedures;
- There can be performed comparative tests with different varieties of vineyards to identify the specific of the area and to establish the aromatic differentiation criteria.

REFERENCES

1. Ambrosi, Bernd, Erika Maul, Erst Rühl, Joachim Schmid și Fritz Schuhmann. 2001. Farbatlas Rebsorten. Stuttgart: Eugen Ulmer Auflage.
2. Ambrosi, H., Bernd H. E. Hill, Erika Maul, Erst H. Rühl, Joachim Schmid, Fritz Schuhmann:(2011). Farbatlas Rebsorten, 3. Auflage, Eugen Ulmer;
3. Antocea Arina O. și Ioan Nămolășanu. 2007. Oenologie: Defectele și bolile vinului (recunoaștere și metode de stabilizare). București: Editura AMC - UȘAMV.
4. Antocea Arina Oana, 2007. Oenologie (Chimie și analiză senzorială), Editura Universitaria, Craiova
5. Antocea Arina Oana, Nămolășanu Ioan, 2005. Oenologie (Controlul și prevenirea fraudelor), Editura Ceres, București
6. Antocea, A. O., Nămolășanu, I., (2005). Folosirea rațională a dioxidului de sulf în producerea și îngrijirea vinurilor, Editura Ceres, București;
7. Antocea, Arina O. 2007. Chimie și analiză senzorială. Craiova: Editura Universitaria.
8. Ashenfelter, O. and Storckmann K. (2001). The quality of vineyard sites in the Mosel valley of Germany. Cahier Scientifique de "Observatoire de Conjonctures Viticoles Européenne", 4, 1-13
9. Bailly, S., Jerkovic, V., Marchand-Brynaert, J. And Collin, S., (2006). Aroma extraction dilution analysis of Sauternes wines. Key role of polyfunctional thiols. Journal of Agricultural and Food Chemistry 54, 7227-7234;
10. Bailly, S., Jerkovic, V., Meuree, A., Timmermans, A and Collin, S., (2009). Fate of key odorants in Sauternes wines through again, Journal of Agricultural and Food Chemistry 57, 8557-8563;
11. Bailly, Sabine, Vesna Jerkovic, Andree Meuree și Sabine Collin. 2009. „Fate of key odorants in Sauternes wines through again”, Journal of Agricultural and Food Chemistry, 57: 8557-8563;
12. Bailly, Sabine, Vesna Jerkovic, Jacqueline Marchand-Brynaert și Sabine Collin. 2006. „Aroma extraction dilution analysis of Sauternes wines”. „Key role of polyfunctional thiols”. Journal of Agricultural and Food Chemistry, 54: 7227-7234.
13. Bargmann, C.J. Geology and Wine 7. (2003). Geology and wine production in the Coastal Region, western Cape Province, South Africa. Geoscience Canada, 30, 161-182;
14. Bartowsky, E. J., and Henschke, P.A. (2004). The „buttery” attribute of wine- diacetyl- desirability, spoilage and beyond, International Journal of Food Microbiology 96, 235-252;
15. Bartowsky, E. J., and Henschke, P.A. (2008). Acetic acid bacteria spoilage of bottled red wine- A review. International Journal of Food Microbiology 125, 60-70;
16. Bartowsky, E. J., Xia, D., Gibson, R.L., Fleet, G.H. and Henschke, P.A. (2003). Spoilage of bottled red wine by acetic acid bacteria, Letters in Applied Microbiology 36, 307-314;

17. Bartowsky, Eveline și Paul Henschke. 2004. „The „buttery” attribute of wine - diacetyl- desirability, spoilage and beyond”. *International Journal of Food Microbiology*, 96: 235-252;
18. Bauer, K., [Regner](#), F., Barbara Schildberger, (2013). *Weinbau*. 9. Auflage. avBuch im Cadmos Verlag, Wien;
19. Bavaresco, L. and Poni, S. (2003). Effect of calcareous soil on photosynthesis rate, mineral nutrition, and source-sink ratio of table grape. *Journal of Plant Nutrition*, 26, 2123 – 2135;
20. Bayonove, C, Baumes, R., Crouzet, I., Gunata. Z. , (1998). Arômes. In: Flanzy, C. (Ed.) *Oenologie, fondements scientifiques et technologiques*. Lavoisier, Tec & Doc. London, Paris, New York, 163-235;
21. Băducă Cîmpeanu Constantin, (2008). *Bazele biotehnologiilor vinicole*, Editura Sitech-Craiova;
22. Băducă Cîmpeanu Constantin, (2008). *Degustarea vinului (Bazele științifice ale degustării)* Editura Sitech, Craiova;
23. Bell S.J., Henschke P.A., 2005. Implications of nitrogen management for grapes and wine, *Australian Journal of Grape and Wine Research* 11: 242-295
24. Blouin Cruege, (2003), *Analyse et composition des vins. Comprendre le vin*, Dunod, Paris;
25. Blouin, Cruege. 2003. *Analyse et composition des vin*, Paris: Editura Dunod.
26. Boelens, M.H. ,1993. Volatile character-impact sulfur compounds and their sensory properties. *Perfumer & Flavorist* 18, 29-39;
27. Bordei D., Teodorescu F., Toma M. (2000). *Știința și tehnologia panificației*, Ed. Agir, București;
28. Bouquet, A. (1982). Origine et évolution de l'encépagement français à travers les siècles. *Le progress agricole et viticole* 99, 110–121;
29. Bouquet, Alain. 1982. „Origine et évolution de l'encépagement français à travers les siècles”. *Le progress agricole et viticole*, 99:110–12;
30. Bourquin, J.C., Sonko, A., Otten, L. & Walter, B. (1993). Restriction fragment length polymorphism and molecular taxonomy in *Vitis vinifera* L. *Theoret. Appl. Genet* 87, 431–438;
31. Bowers J., Carole P. Meredith, (1997). The parentage of a classic wine grape, Cabernet Sauvignon nature *Genetics* 16, 84 – 87;
32. Bowers, J.E. (1993). DNA fingerprinting analysis of some winegrape cultivars. M.S. thesis.(University of California, Davis);
33. Bowers, J.E., Dangl, G.S.,&Meredith, C.P. (1996). Isolation and characterization of new polymorphic simple sequence repeat loci in grape (*Vitis vinifera* L). *Genome* 39, 628–633;
34. Bowers, J.E., Sandman, E.B. & Meredith, C.P. (1993). DNA fingerprint characterization of some California winegrape cultivars. *Amer. J. Enol. Vitic.* 44, 266–274;
35. Bowers, John, Elizabeth Sandman și Carole Meredith. (1993). „DNA fingerprint characterization of some California winegrape cultivars”. *American Journal of Enoogy and Viticulture*, 44: 266–274;

36. Bowers, John, George Dangi și Carole Meredith. (1996). „C.P. Isolation and characterization of new polymorphic simple sequence repeat loci in grape”. *Genome*, 39: 628–633;
37. Bowers, John și Carole Meredith. (1997). „The parentage of a classic wine grape. Cabernet Sauvignon nature Genetics”. *Nature Genetic*, 16: 84 – 87;
38. Butnaru G., Alin Dobrei, Diana Costinel, Ioan Stefanescu, Gheorghe Titescu, Alexandra Boleman 2008, The associate effect of depleted water and magnetic particles on *vitis vinifera* organogenesis, Ed.Conphys, Rm.Vâlcea;
39. Calderone G., Naulet N., Guillou C., Reniero F., (2004), Characterization of European wine glycerol, stable carbon isotope approach, *Journal of Agriculture and Food Chemistry*, 52, 5902–5906;
40. Calderone, Giovanni, Norbert Naulet, Claude Guillou și Fabiano Reniero F. (2004). „Characterization of European wine glycerol. stable carbon isotope approach”. *Journal of Agriculture and Food Chemistry*, 52: 5902–5906;
41. Campo, Eva, Juan Cacho și Vicente Ferreira. (2008). „The chemical characterization of the aroma of dessert și sparkling white wine (Pedro Ximenez. Fino. Sauterns and Cava) by gas chromatography olfactometry and chemical quantitative analysis”. *Journal of Agricultural and Food Chemistry*, 56: 2477-2484;
42. Cano Lopez M., Pardo Mínguez F., Schmauch G., Saucier C., Teissedre P.L., Lopez-Roca J.M., and Gomez-Plaza E., (2008). Effect of Micro-oxygenation on Color and Anthocyanin-Related Compounds of Wines with Different Phenolic Contents, *J. Agric. Food Chem.*, 56, 5932-5941;
43. Caruzzo, C.-H. (1991). *Cépages du Valais*. Ketty & Alexandre, Chappelle-sur-Moudon. Switzerland;
44. Chisholm, M.G., Guiher, L.A. and Zaczekiewicz, S.M., (1995). Aroma characteristics of aged Vidal blanc wine. *American Journal of Enology and Viticulture* 46, 56–62;
45. Christoph, N., G. Baratossy, V. Kubanovic, B. Kozina, A. Rossmann, C. Schlicht, and S. Voerkelius, (2004). Possibilities and Limitations of Wine Authentication Using Stable Isotope Ratio Analysis and Traceability. Part 2: Wines from Hungary, Croatia and Other European Countries, *Mitt. Klosterneuburg*. 54, 155;
46. Cita, M.B., Chiesa, S., Colacchi, R., Crisci, G.M., Massiota, P., Parotto, M. (2004). *Italian Wines and Geology*, Milan: ME-MA editrice;
47. Costinel Diana, Voicu Grecu, Raluca Vremera și Stela Cuna, (2009). Stable oxygen and hydrogen isotopes measurements by cf-irms with applications in hydrology studies”, *journal of physics: conference series* vol. 182 012038; issn: doi: 10.1088/1742-6596/182/1/011002, ed. Institute of physics publishing dirac house temple back Bristol;
48. Costinel, D., Ionete, R., Vremera, R., , Stanciu, V.,(2008). High-precision ¹³C and ¹⁸O measurements by continuous flow-Isotope Ratio Mass Spectrometry (CF-IRMS) in Romanian wines characterizatio, *Rev. Progress in Cryogenics and Isotopes Separation*, 12-17;

49. Costinel, D., Lazar, R., Vremera, R., (2007). Romanian wines characterization with isotopic analysis, in concordance with the europeans standard, *Studia Universitatis Babes-Bolyai, Geologia*, 52 (1), 12;
50. Costinel, D., Tudorache, A., Ionete R.E., Vremera R., (2011). The Impact of Grape Varieties to Wine Isotopic Characterization, *Analytical Letters*, 44:18, 2856-2864, DOI: 10.1080/00032719.2011.582546;
51. Costinel, Diana, Roxana Ionete, Raluca Vremera și Vasile Stanciu. (2008). „High-precision ^{13}C și ^{18}O measurements by continuous flow-Isotope Ratio Mass Spectrometry (CF-IRMS) in Romanian wines characterization”. *Progress in Cryogenics and Isotopes Separation*, 12-17;
52. Cotea D.V., Zănoagă C.V., Cotea V.V., (2009), *Tratat de oenochimie, vol.I*, Ed. Academiei Române București;
53. Cotea V. D., (1985) – *Tratat de oenologie, vol.I*, Editura Ceres, București;
54. Cotea V. D., Barbu N., Grigorescu C. C., Cotea V. V., (2003)- *Podgoriile și vinurile româniei*, Editura Academiei Române, București;
55. Cotea V. D., Sauciu J. H., (1988) – *Tratat de oenologie, vol.II*, Editura Ceres, București;
56. Cotea V. D., Zănoagă C.Z., Cotea Valeriu V., (2010). *Tratat de oenochimie, vol. I* Editura Academiei Române, București;
57. Cotea V. D., Zănoagă C.Z., Cotea Valeriu V., (2010b). *Tratat de oenochimie, vol.II*, Editura Academiei Române, București;
58. Cotea V. D., Zănoagă Cristinel Z., Cotea Valeriu V., (2010). *Tratat de oenochimie, vol.I*, Editura Academiei Române, București;
59. Cotea V., Cotea V. D., (1996). *Viticultură, ampelografie și oenologie*, Editura Didactică și Pedagogică, București;
60. Cotea V.V., Cotea V.D., (2006). *Tehnologii de producere a vinurilor*, Editura Academiei Române;
61. Cotea Valeriu V., (2005). *Tehnologia vinurilor efervescente*, Editura Academiei Române, București;
62. Croitoru Constantin, (2009). *Tratat de știință și inginerie oenologică (Produse de elaborare și maturare a vinurilor)*, Editura AGIR, București;
63. Cullere, L., Escudero, A., Cacho, J. And Ferreira, V. (2004). Gas chromatography-olfactometry and chemical quantitative study of the aroma of six premium quality Spanish aged red wines. *Journal of Agricultural and Food Chemistry* 52, 1653-1660;
64. De Revel, G., Lonvaud-Funel A., Bertrand, A. (1996). Etude des composés dicarbonylés au cours des fermentations alcoolique et malolactique. In: Lonvaud-Funel, A. (Ed.) *Oenologie 95; 5e Symposium international d'oenologie de Bordeaux*. Lavoisier-Tec & Doc, Paris, France, 321-325;
65. De Virgilio C., Hottiger T., Dominguez J., Boller T., Wiemken, A. (1994). The role of trehalose synthesis for the acquisition of thermotolerance in yeast, I. Genetic evidence that trehalose is a thermoprotectant, *Eur. J. Biochem.*, 219, 179-186;
66. Díaz-Riquelme, J., D. Lijavetzky, J.M. Martínez-Zapater, M., J., Carmona, (2010). Genome-wide analysis of mikc-type mads-box genes in grapevine, *Australian Journal of grape and wine research*, vol.16, issue s1, A 47-52;

SCIENTIFIC PAPERS PUBLISHED ON TOPICS PhD Thesis**26 scientific papers published on thesis topics 2012-2015 in which 10 scientific papers published in journals or publications ISI**

1. **Diana Ionela Stegarus**, *Evaluation of Transitional Metals Concentrations in Various Romanian Wines by Graphite Furnace Aas*“, Proceedings of the 43th International Symposium Actual Tasks on Agricultural Engineering”, 24-27 Februarie 2015 Croatia - Opatija., ISSN 1848-4425, pg. 583-588, **2015**
2. **Diana STEGARUS**, Violeta NICULESCU, Cecilia GEORGESCU, Ramona IANCU, Ecaterina LENGYEL and Ovidiu TITA, *Techniques for extraction and enhancing flavour substances in Chardonnay and Sauvignon blanc grapes by enzyme substrate*, Rev. Roum. Chim., 60(5-6), 507-513, **2015**
3. Raluca Popescu, Diana Costinel, Roxana Elena Ionete, **Diana Ionela Stegarus**, A. C. Marinescu, Aurelia Tudorache, *Aroma Profile of Young Wines from Ten Native and Foreign Varieties Grown in Romania* Chem. Abs.: RCBUAU 65 (2) (137-252) ISSN 0034-7752 Vol. 65, no.2, February, **www.revMaterialePlastice.ro, 2014**
4. **Diana Stegarus**, Violeta Niculescu, Cecilia Georgescu, Ramona Iancu, Ecaterina Lengyel, Ovidiu Tita, *Techniques for extraction and enhancing flavours in chardonnay and sauvignon blanc grapes by enzyme substrate*, 2nd International Conference on Analytical Chemistry Valahia University of Targoviste, September 17- 21, ISBN 978-973-712-902-4, pp. 129, **2014**
5. Ramona Iancu, Ovidiu Tița, Ecaterina Lengyel, **Diana Stegăruș**, Letiția Oprean, Mihaela Tița, *The identification of dedicated usage varietal yeasts*, Conference proceeding, International Multidisciplinary Scientific Geoconference, SGEM 2013, www.sgem.org, Thomson Reuters, ISI Web of Science, ISI Web of Knowledge, în evaluare, Albena Bulgaria, Advances in Biotechnology, **ISSN 1314-2704, 279-286, 2013**
6. Ecaterina Lengyel, Letitia Oprean, Ramona Iancu, Otto Ketney, Ovidiu Tita, **Diana Stegăruș**, Raluca Popescu, *The extraction and potentiating of the aroma compound in red grapes using commercial enzymatic mixtures*, Conference proceeding, International Multidisciplinary Scientific Geoconference, SGEM 2013, www.sgem.org, Thomson Reuters, ISI Web of Science, ISI Web of Knowledge, Albena Bulgaria, Advances in Biotechnology, **ISSN 1314-2704, 317-324, 2013**
7. Ecaterina Lengyel, Letiția Oprean, **Diana Stegăruș**, Raluca Popescu, Ramona Iancu, Mariana Liliana Păcală, Otto Ketney, *Studies on the use of maceration enzymes in technology for obtaining aromatic Muscat Ottonel wines from Recas winery*, Conference proceeding, International Multidisciplinary Scientific Geoconference, SGEM 2013, www.sgem.org, Thomson Reuters, ISI Web of Science, ISI Web of Knowledge, în evaluare, Albena Bulgaria, Advances in Biotechnology, **ISSN 1314-2704, 249-256, 2013**
8. **Diana Stegăruș**, Raluca Popescu, Violeta Niculescu, Ecaterina Lengyel, Ovidiu Tita, *Gas-chromatography study regarding the accumulation of volatile compounds responsible for semi-flavoured wines fragrances*, Conference proceeding, International

- Multidisciplinary Scientific Geoconference, SGEM 2013, www.sgem.org, Thomson Reuters, ISI Web of Science, ISI Web of Knowledge, în evaluare, Albena Bulgaria, Advances in Biotechnology, ISSN 1314-2704, 155-162, 2013
9. Mariana Pacala, Lucica Brudiu, Ecaterina Lengyel, **Diana Stegarus**, Mihaela Begea, *Physicochemical monitoring of the fermentation of mixed cereal-based substrate to obtain a functional beverage*, Conference proceeding, International Multidisciplinary Scientific Geoconference, SGEM 2013, www.sgem.org, Thomson Reuters, ISI Web of Science, ISI Web of Knowledge, în evaluare, Albena Bulgaria, Advances in Biotechnology, ISSN 1314-2704, 211-218, 2013
 10. **Diana Stegăruș**, Claudia Sandru, Ioan Stefanescu, Ovidiu Tita, Ramona Iancu, Mariana Pacala, Ecaterina Lengyel, *The monitoring of the physical-chemical and bacteriological indicators of Cibin river in view of quality classification*, Conference proceeding, International Multidisciplinary Scientific Geoconference, SGEM 2013, www.sgem.org, Thomson Reuters, ISI Web of Science, ISI Web of Knowledge, în evaluare, Albena Bulgaria, Advances in Biotechnology, ISSN 1314-2704, 1045-1052, vol. I, 2013

15 scientific papers published in journals indexed in international databases (BDI), or volume of international conferences

1. Ecaterina Lengyel, **Diana Ionela Stegăruș**, Corina Teodora Ciucure, Ovidiu Tița, *Assessment of anthropogenic ecological systems in the Apold depression to a sustainable management*, Management of Sustainable Development Sibiu, Romania, Volume 7, No.1, 13-17, 2015
2. **Diana Ionela Stegăruș**, *Microbiological characterization of red and white wines originated from vineyards of Getic piedmont* Management of Sustainable Development Sibiu, Romania, Volume 6, No.2, 61-64, 2014
3. Ecaterina Lengyel, Letiția Oprean, **Diana Stegăruș**, Simona Moșteanu, Mihaela Balteș-Florea, Ramona Iancu, Ovidiu Tița, *Studies regarding the capacity of selected yeast from local strains to produce glycerol*, Proceeding of the International Conference Agri-Food Sciences, Processes And Technologies, Agri-Food, Sibiu, Romania, 246-252, 2014
4. Dan Mutu, **Diana Stegăruș**, Ecaterina Lengyel, Adina Frum, Gabriela Raducan, Ramona Iancu, Ovidiu Tița, *Physical chemical characterization of wines produced from Feteasca Regala and Riesling Italian processing by four different technological*, Acta Universitatis Cibiniensis, Serie E, Food Technology, Vol.XVIII, (1), ISSN 1221-4973, 2014
5. **Diana Stegăruș**, Ecaterina Lengyel, Daniela Șandru, Dan Mutu, Ramona Iancu, Gabriela Raducan, Ovidiu Tița, *Optimizing the operation of maceration to obtain quality white wines*, Acta Universitatis Cibiniensis, Serie E, Food Technology, Vol.XVIII, (1), ISSN 1221-4973, pp. 59-70, 2014
6. Ecaterina Lengyel, Letiția Oprean, **Diana Stegăruș**, Ramona Iancu, Irina Geană, Dan Mutu, Ovidiu Tița, *The chromatographic detection of the rutin in the aromatic and semi aromatic autochthonous musts variety*, Acta Universitatis Cibiniensis, Serie E, Food Technology, Vol. XVIII, (1), ISSN 1221-4973, pp. 47-52, 2014
7. Ramona Iancu, **Diana Stegarus**, Simona Mosteanu, Ecaterina Lengyel, Letitia Oprean, Ovidiu Tita, *Monitoring of yeast replicative capacity *Sacharomyces cerevisiae* in specific*

- culture media*, Conference with international participation Agri-Food Sciences, Processes And Technologies”, Sibiu, 14-15 mai, ISSN 1843-0694, pg.232-238 , **2014**
8. **Diana Stegarus**, Ramona Iancu, Ecaterina Lengyel, Ovidiu Tita, Simona Mosteanu, Cristina Ionescu, *Optimizing alcoholic fermentation of the wine pressing originated from Tokaj , Hungary*, Conference with international participation Agri-Food Sciences, Processes And Technologies”, Sibiu, 14-15 mai, ISBN 1843-0694, pp. 239-245 , **2014**
 9. **Diana Stegăruș**, Violeta Niculescu, Ovidiu Tița, Mihaela Tița, Ecaterina Lengyel, Dan Mutu, *Using selected domestic and commercial yeasts for potentiation of flavours in wine*, The 13th International Simposium „Prospects for the 3rd Millenium Agriculture”, 25-27 september 2014 Cluj Napoca, ISSN: 2392-6937, ISBN-L: 2392-6937, pp.618, **2014**
 10. **Diana Stegarus**, Violeta Niculescu, Claudia Sandru, Roxana Ionete, Ecaterina Lengyel, Ovidiu Tita, *Application of graphite furnace AAS for some transitional metals determination in romanian wines*, XXXIII-rd Romanian Chemistry Conference, 1-3 october 2014, Călimănești-Căciulata, Vâlcea – România, p.24, **2014**
 11. **Diana Ionela Stegarus** , *Influence of Climatic Factors on Sensory Characteristics of Wines Originated from Intra and Extra Carpathian Areas*”, “Progress of Cryogenics and Isotopes Separation” 23-24 octombrie 2014, pag. 43-52, volume 17, issue 2/**2014**
 12. Violeta Niculescu, Irina Geana, Nadia Paun, Roxana Ionete, **Diana Stegarus**, *Spectrophotometric techniques used for monitoring food additives – an overview*, Progress of Cryogenics and Isotopes Separation” 23-24 octombrie 2014, pag. 63-72, volume 17, issue 2/**2014**
 13. **Stegarus, D.**, Violeta Niculescu, Claudia Sandru, Ecaterina Lengyel, *Determination of nickel content in romanian wines*, *Progress of Cryogenics and isotopes separations*, vol.XVI, (1), ISSN 1582-2575, pp. 97-104, **2013**
 14. Ecaterina Lengyel, Letitia Oprean, Ketney Otto, Ramona Iancu, **Bociu Diana**, Ovidiu Tita, *Physical and chemical characterization of flavored and demy flavored wines from Recas vineyard*, Progress of Cryogenics and isotopes separations, vol.XV, issue 1, ISSN 1582-2575, 87-92, **2012**
 15. Ecaterina Lengyel, Letiția Oprean, O. Tița, Mariana-Liliana Păcală, Ramona Iancu, **Diana Stegăruș** , O. Ketney , *Isolation and molecular identifications of wine yeast strains from autochthonous aromatic and semi aromatic varieties*, Annals of RSCB, Vol.. XVII, ISSUE 2, ISSN 2067-3019, 134-138, **2012**
- 1 chapter in the** "Perspective actuale privind dezvoltarea durabila" ISBN 978-606-26-0358-8, ” Evaluarea calitativă și cantitativă a unor vinuri din soiuri autohtone privind evoluția esterilor”, pag. 103-133