

SIBIU COUNTY COUNCIL
„ASTRA” NATIONAL MUSEUM COMPLEX SIBIU
„ASTRA” MUSEUM OF
TRADITIONAL FOLK CIVILIZATION SIBIU

Prof. Dr. Corneliu Ioan Bucur

**„ASTRA”
MUSEUM OF
TRADITIONAL
FOLK CIVILIZATION
(Dumbrava Sibiului)
Catalogue**



Publishing House „ASTRA MUSEUM”
Sibiu, 2008

© Editura / Publishing House „ASTRA Museum”



20

Shepherd's Homestead and Candle Maker's Workshop, Rășinari, Sibiu County



Barn with stable



Shelter for wagons

Among the Romanian villages that *specialize* in sheep farming and sheep products, Rășinari is perhaps one of the most outstanding pastoral centers in Transylvania. This settlement was the first one that was documented as practicing the wintering of sheep in closed sheepfolds in Wallachia at around 1400 AD.

In addition to wool and sheep leather processing, *candle making from sheep tallow* in an ordinary workshop inside the shepherds' cottages was also an occupation though later became a handicraft. All of these occupations were practiced until the beginning of the 20th century helping to increase the fame of this mountain village. The candles produced were not only used in peasants' cottages but also in schools, public buildings, and religious buildings. The candle maker's workshop was usually an independent building consisting of one or two rooms.

Specific implements to this trade can be seen here and include the oven with the vat for melting the sheep tallow, big wooden spoons, the tallow press used to extract the tallow from the sheep fat, and the candle makers' chair used for molding the fluid tallow.

In order to evacuate the smoke and awful smell resulting from the melted tallow, a flue is raised on the edge of the roof. The shepherd's homestead has all the features typical of monuments in Mărginimea Sibiului.

Its floor plan consists of three rooms including a vestibule in the middle, *the big room* without a stove on the right, and *„the small room”* with an oven on the left. Each of the short fronts has a small window for dividing the inside room into two parts: a dark part for the bed and a bright one for the table.

The roof gables are notable due to their short sides that are very high, sharp, and covered with 1.60 meter long shingles. The long front of the house is decorated with the porch, or *„privar”*, that is made up of carved pillars that protect the entrance to the cellar.

The barn with two stables and a pantry are built using the traditional technique of intersecting horizontal beams carved on four sides with a two-sloped roof covered with fir shingles. A fence, called a *„pălan”*, which is made of boards, that includes a main gate, surrounds the whole homestead and another artistically decorated smaller gate that is very famous in the Mărginimea Sibiului region.

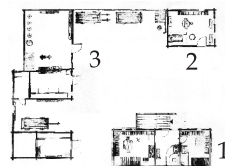
This homestead illustrates the specific and original architecture of the shepherd's homestead consisting of a yard enclosed by buildings, fences and gates that promote the image of a fortified citadel. It is an architectural step in the direction of the most complex building type of the homestead with a reinforced enclosure.

This homestead, together with the sheepfold from Rășinari, make up a pastoral complex illustrating the shepherds' pastoral life in Mărginimea Sibiului that has been preserved from ancient times until now.



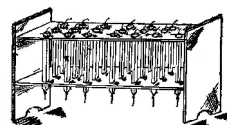
Profile of the facade for the francon house

Homestead layout

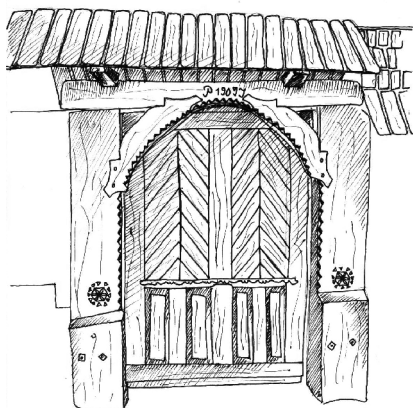


Legend:

1. House
2. Candle workshop
3. Barn with two stables and pantry



Candle-making chair



Detail of the gate

TABLE OF CONTENTS

- ASTRA MUSEUM:	
THE MUSEUM OF ROMANIAN TRADITIONAL FOLK CIVILIZATION	
1. <i>In the beginning, the museum was simply called the „ASTRA MUSEUM.”</i>	11
2. <i>Origins of the Museum of Traditional Techniques</i>	15
3. <i>The Museum of Traditional Techniques: The scientific conception, thematic structure and exhibitional organization.</i>	18
4. <i>Transition from the Museum of Traditional Techniques to the „ASTRA” MUSEUM OF FOLK CIVILIZATION</i>	24
5. <i>Thoughts and Impressions</i>	26
MATERIAL CULTURAL PATRIMONY	33
- <i>Monumental Gate, Mârşa, Sibiu County (73E)</i>	34
- <i>Traditional Arts Galleries</i>	36
- <i>Pavilion for Cultural Scientific Manifestations and Film Exhibitions</i>	37
- <i>House, Sârbi, Maramureş County, Tourist Information Center (140 C)</i>	38
- <i>The Thematic Project Exhibition of the open air museum (B)</i>	40
PROCEDURES TO OBTAIN AND PROCESS ANIMAL AND VEGETAL PRODUCTS INTO FOOD	44
Group A - Hunting traps	
- <i>Bear Trap</i>	53
- <i>Marten traps</i>	53
- <i>Hole with Net for Wolves</i>	53
- <i>Coop Trap for Foxes</i>	54
- <i>Iron Trap for Bears</i>	54
Group B - Fishing	
- <i>Icehouse, Mahmudia, Tulcea County (8 A)</i>	55
- <i>Fishery - „Cherhana”, Mahmudia, Tulcea County (8)</i>	56
- <i>Fisherman's Cabin, Mahmudia, Tulcea County (9)</i>	58
- <i>Fisherman's Homestead, Mahmudia, Tulcea County (10)</i>	59
Group C - Bee keeping, wax collecting and candle making	
- <i>Press for „Wax Cakes”, Sebeşu de Jos, Sibiu County (13)</i>	61
- <i>„Wax Cakes” Presser's and Candle Maker's Homestead, Sebeşu de Jos, Sibiu County(14)</i>	63
Group D - Animal raising	
- <i>„Surlă”, Sătic, Argeş County (19 B)</i>	65
- <i>Pastoral Cabin, Jieţ, Hunedoara County(19 A)</i>	66
- <i>Pastoral Hut with „crosnie” and „obor”, Sătic, Arges County (19)</i>	67
- <i>Polygonal Sheepfold, Ludeştii de Sus, Hunedoara County (15 A)</i>	68
- <i>Sheepfold, Râşinari, Sibiu County (15)</i>	70
- <i>Plain Cross, Jieţ, Hunedoara County (17 C)</i>	72
- <i>Pastoral Homestead with „Colna” - Type Sheep Pen, Câmpu lui Neag, Hunedoara County (16)</i>	73

- <i>Sheepfold with Two Rooms (boiling room and cellar)</i> , The Puru Peak, Alba County (17)	75
- „ <i>Cotroană</i> ”, Parâng Mountains, Hunedoara County (17 A)	77
- <i>Cairns</i> , Jieț, Hunedoara County (17 B)	79
- <i>Sheepfold with Three Rooms</i> , Colții Giuvalei Peak, Argeș County (18)	80
- <i>Homestead with Reinforced Enclosure</i> , Măgura, Brașov County (21)	82
- <i>Shepherd's Homestead and Candle Maker's Workshop</i> , Rășinari, Sibiu County (20)	84
Group E – Fruit Processing	
- <i>Fruit Crusher and Fruit Press</i> , Rășinari, Sibiu County (22)	86
- <i>Drying Room for Plums</i> , Bărbuleț, Dâmbovița County (23)	87
- <i>Two Storey Plum Brandy Press House</i> , Polovragi, Gorj County (27)	88
- <i>Plum Brandy Distillery with Water Wheel</i> , Sârbești, Gorj County (25)	90
- <i>Orchard Homestead</i> , Bălănești, Gorj County (29 A)	92
- <i>Fruit Crusher and Fruit Press</i> , Roșia, Sibiu County (22 A)	93
Group F – Grape industry	
- <i>Vineyard Press House</i> , Bălănești, Gorj County (29)	94
- <i>Vineyard Press House with Cellar</i> , Corni-Huși, Vaslui County (31)	96
- <i>Orchard Homestead</i> , Vlădești, Vâlcea County (28)	98
- <i>Medieval Grape Press</i> , Vințu de Jos, Alba County (36 A)	100
- <i>Roman Stone Table Press</i> , Cristian, Sibiu County (36 B)	102
- <i>Exhibition of Presses</i> (34 A)	103
Group G – Oilseed Processing	
- <i>Oil Presser's Homestead</i> , Livada, Hunedoara County (37)	105
- <i>Oil Press with Mortar and Pulley</i> , Arbore, Suceava County (35)	107
- <i>Oil Press with Rams</i> , Racovița, Vâlcea County (36)	109
- <i>Oil Press with Mortar Driven by Animal Power</i> , Grid, Hunedoara County (39)	110
- <i>Oil Press with Tread Mortar</i> , Nădășdia, Hunedoara County (38)	111
- <i>Oil Press with Frontal Tread Wheel</i> , Băiești, Hunedoara County (40)	112
- <i>Oil Press with Hydraulic Mortar with Arrows</i> , Ohaba, Hunedoara County (42)	113
- <i>Hydraulic Oil Press and Cloth Fulling Mill</i> , Tălmăcel, Sibiu County (41)	114
Group H – Agriculture	
- <i>Farmer's Homestead in the Transylvanian Plateau</i> , Mierța-Dragu, Sălaj County (46)	115
- <i>Farmer's Homestead and Shepherd's Hut</i> , Feneș, Alba County (44 A)	117
- <i>Border Crossroad Crucifix</i> , Întregalde, Alba County (44 B)	118
- <i>Pastoral Hut and „Cramba” with Mobile Stall</i> , Feneș, Alba County (44 C)	120
- <i>Farmer's Homestead</i> , Desești, Maramureș County (46 A)	121
- <i>Complex of Traditional Industries with Hydraulic Threshing Machine</i> , Sârbi, Maramureș County (40 B)	123
- <i>Threshing machine</i> (Gura Râului, Sibiu County) (46 B), <i>Activated by a steam engine</i> (Pâncota, Arad County) (46 D)	125
Group I – Pantries, Lofts, Cellars	
- <i>Maize Barn</i> , Șotoștin, Sibiu County (47 G)	127
- <i>Corn Wattle Basket</i> , Hoteni, Maramureș County (47 H)	128
- <i>Hayloft on Poles „Slon”</i> , Curtea de Argeș, Argeș County (47 B)	129
- <i>Pantry („Găbănaș”)</i> , Sâncraiu Almașului, Sălaj County (47 C)	130
- <i>Pantry („Pejniță”)</i> , Răstolțu Mare, Sălaj County (47 A)	131
- <i>Food Pantry</i> , Preluca Noua, Maramureș County (47 D)	132

- <i>Larder</i> , Cerbia, Hunedoara County (47)	133
- <i>Basement (mono-cellar)</i> , Piteștii din Deal, Gorj County (47 F)	134
- <i>Basement with Two-floored Manor House</i> , Bălănești, Gorj County (47 E)	135
Group J - Milling	
- <i>Mill Driven by Hand</i> , Bumbuiești, Vâlcea County (50)	136
- <i>Horse-drawn Mill</i> , Sânpetru, Timiș County (51)	137
- <i>Water-Mill with Horizontal Wheel</i> , Topleț, Caraș-Severin County (52)	139
- <i>Watermill with Horizontal Wheel and Buttons</i> , Svinița, Mehedinți County (53)	141
- <i>Water Mill with Two Horizontal Wheels and Gearing</i> , Râu de Mori, Hunedoara County (53A)	143
- <i>Watermill with Three Horizontal Wheels</i> , Arcani, Gorj County (54)	145
- <i>Watermill with Undershot Wheel</i> , Dăbâca, Hunedoara County (55)	147
- <i>Water Mill with Undershot Wheel</i> , Poienii de Jos, Bihor County (55 A)	148
- <i>Watermill with Overshot Wheel</i> , Orșova, Mureș County (56)	150
- <i>Watermill with Overshot Wheel and Drive in Two Steps</i> , Rogojelu, Cluj County (57)	152
- <i>Watermill with Overshot Wheel</i> , Almaș-Săliște, Hunedoara County (58)	153
- <i>Mill with Lower Admission and Elevator</i> , Roșcani, Hunedoara County (60 A)	154
- <i>Draw Well with Winch Driven by Animal Power</i> , Chirnogeni, Constanta County (67 A)	156
- <i>Two-storey Wind Mill</i> , Dunavăț, Tulcea County (64)	157
- <i>Small Windmill with Stone Socle</i> , Enisala, Tulcea County (63)	158
- <i>Two-storey Windmill</i> , Frecăței, Tulcea County (65)	159
- <i>Windmill with Sails</i> , Curcani, Constanța County (66)	161
- <i>Floating Mill</i> , Lucăcești, Maramureș County (61)	163
- <i>Floating Mill</i> , Munteni, Vâlcea County (62)	164
- <i>Smock Mill</i> , Beștepe, Tulcea County (67)	166
- <i>Hydraulic Mill with „Alvan”</i> , Ciocmani, Sălaj County (60)	168

TECHNIQUES AND MEANS OF TRANSPORTATION AND COMMUNICATION

- <i>Pavilion for the Exhibition of Traditional Means of Transportation</i> (74 C)	175
- <i>Monoboat (Single Tree Trunk Boat) on Siret River</i> , Bacău County (74 B)	178
- <i>Ferry</i> , Turnu Roșu, Sibiu County (74)	180
- <i>Ferry with Paddle Wheel</i> , Constanța County (74 A)	182

MONUMENTS OF PUBLIC USE

- <i>Monumental Gate</i> , Sat Șugatag, Maramureș County (73 A)	188
- <i>House with „vraniță”</i> , Bârsana, Maramureș County (73 B)	189
- <i>Traditional Inn</i> , Tulgheș, Harghita County, (73)	191
- <i>The Witch House</i> , Săpânța, Maramureș County (73 C)	194
- <i>Rural Teacher's House</i> , Săliște, Sibiu County (73 I)	196
- <i>Traditional Inn</i> , Veștem, Sibiu County (73 K)	198
- <i>Swing</i> , Bicaz-Chei, Neamț County (72 C)	200
- <i>Bowling Alley</i> , Păltiniș, Sibiu County (72 B)	202
- <i>Peasant Pub</i> , Bătrâni, Prahova County (72)	204

- <i>Game Pavilion</i> , Botiza, Maramureş County (72 A)	206
- <i>Game Pavilion and Fire Station</i> , Cacova-Fântânele, Sibiu County (73 G)	207
- <i>Fire Station</i> , Colun, Sibiu County (73 H)	209
- <i>Pavilion-resting area</i> , Piatra, Maramureş County (73 J)	210

WOOD, STONE, METAL, CLAY, AMBER AND MINERAL PROCESSING 212

Group A – Wood Processing

- <i>Water Mill with Six Horizontal Wheels</i> , Găleşoaia, Gorj County (54 A)	224
- <i>Homestead and Workshop of Stave Maker</i> , Tomuţeşti, Alba County (92 A)	227
- <i>Priest's Homestead and „Avram Iancu” Memorial school</i> , Stăneşti, Alba County (92 B)	228
- <i>Ambulant Trader's Homestead and Workshop</i> , Goieşti-Vidra, Alba County (92 C)	230
- <i>Commemoration Crucifix</i> , Nereju, Vrancea County (89 A)	232
- <i>Cooper's Homestead and Workshop</i> , Nereju, Vrancea County	233
- <i>Homestead and Workshop of a Stave and Wheel Maker</i> Obrârşa, Hunedoara County (90)	235
- <i>Homestead and Workshop of a Stave Maker</i> , Râşculita, Hunedoara County (87)	237
- <i>Maramureş Architectural Complex</i> (79)	239
<i>Archaic Homestead</i> , Fereşti, Maramureş County (79 I)	240
<i>„Nemeş” Homestead</i> , Berbeşti, Maramureş County (79 II)	241
- <i>„Sfinţii Arhangheli Mihail şi Gavriil” Wooden church; Cemetery Crucifix</i> , Bezded, Sălaj County (79 A)	243
- <i>Mat Maker's Homestead and Workshop</i> , Văleni, Gorj County (99)	245
- <i>Stone Crossroad Crucifix</i> , Cacova-Fântânele, Sibiu County (79 E)	246
- <i>„Casoaiie”,</i> Cacova-Fântânele, Sibiu County, (79 D)	248
- <i>Architectural Complex</i> (Stolojani and Târgu Cărbunefşti, Gorj County) (80)	250
<i>„Old” homestead</i> , Stolojani, Gorj County (80 I)	251
<i>Homestead with Two- Storey House</i> , Târgu Cărbunefşti, Gorj County (80 II)	253
- <i>Whistling Pipe Maker's Homestead and Workshop</i> , Hodac, Mureş County (97)	255
- <i>Homestead and Workshop for Producing Musical Instruments</i> , Câmpulung Moldovenesc, Suceava County (96)	257
- <i>Stave Maker's Homestead and Workshop</i> , Straja, Suceava County (96 A)	259
Subdivision of traditional industries – sawmills	
- <i>Sawmill with Small Water Wheel</i> , Gura Râului, Sibiu County (83)	261
- <i>Hydraulic Sawmill (frame saw) with Gearing Transmission</i> , Şuncuiuş, Bihor County (82 A)	263
- <i>Complex of Peasant Manufacturing</i> , Tomeşti, Hunedoara County (82)	265
- <i>Horse Drawn Saw Mill (with „Gepel”)</i> , Gura Râului, Sibiu County (81)	267

Group B – Metal processing

- <i>Pestle stamp for Crushing Gold Containing Ores and „Cram”</i> , Abrud, Alba County (109)	269
- <i>Gold Mine Gallery</i> , Roşia Montana, Alba County (108)	271
- <i>Hydraulic Hammer</i> , Rimetea, Alba County (107)	273
- <i>Stone Cross</i> , Bezdead, Dâmboviţa County (97 F)	275
- <i>Blacksmith's and Wheel Maker's Homestead and Workshop</i> , Măneşti, Dâmboviţa County (112)	276

- <i>Bellmaker and Blacksmith's Workshop</i> , Poiana Teiului, Neamț County (113)	277
- <i>Blacksmith's Homestead and Workshop</i> , Călinești, Maramureș County (111)	278
Group C – Clay Processing	
- <i>Potter's Homestead and Workshop</i> , Marginea, Suceava County (116)	279
- <i>Potter's Homestead and Workshop</i> , Săcel, Maramureș County (117)	281
- <i>Potter's Homestead and Workshop</i> , Oboga, Olt County (120)	283
- „ <i>Pogorârea Sfântului Duh</i> ” <i>Wooden Church</i> , Dretea, Cluj County (79 G)	285
- <i>Potter's Homestead and Workshop</i> , Horezu, Vâlcea County (120 A)	289
- <i>Potter's House and Workshop</i> , Horezu, Vâlcea County (120 B)	291
- <i>Crossroad Crucifix</i> , Bunești, Vâlcea County (79 J)	293
- <i>Potter's Homestead and Workshop</i> , Sasca-Română, Caraș-Severin County (118)	294
- <i>Potter's Homestead and Workshop</i> , Corund, Harghita County (121)	296
- <i>Potter's House and Workshop</i> , Saschiz, Mureș County (119)	298
- <i>Potter's Homestead and Workshop</i> , Obârșă, Hunedoara County (123)	300
- <i>Duplex of Potters' Homesteads</i> , Găleșoaia, Gorj County	302
„ <i>Old</i> ” house (120 C)	303
„ <i>New</i> ” house (120 D)	304
Group D – Ore and Stone Processing	
- <i>Amber Processing Homestead and Workshop</i> , Colți, Buzău County (105)	306
- <i>Stone Processing Homestead and Workshop</i> , Cupșeni, Maramureș County (104)	308
- <i>Marble Miners Homestead</i> , Alun, Hunedoara County (108 A)	310
- <i>Well with „Hecna”</i> , Dumbrăvești, Prahova County (73 D)	312

PROCESSES AND PROCEDURES FOR MANUFACTURE OF PELTS, ANIMAL AND VEGETAL FIBERS UTILIZED FOR GARMENTS AND HOUSEHOLD ITEMS 316

Group A – Homestead industry

- <i>Fur Coat and Belt Maker's Homestead and Workshop</i> , Săliște, Sibiu County (124)	321
- <i>Wooden Crossroad Crucifix</i> , Sibiel, Sibiu County (124 A)	323
- <i>Homestead and Workshop for Whirlpool and «Dârsta» Processed Cloths</i> , Tilișca, Sibiu County (128 A)	325
- <i>A Homestead of Whirlpool Cloth Weaver</i> , Săpânța, Maramureș County (141 A)	328
- <i>Wool Processing Pastoral Homestead and Workshop</i> , Poiana Sibiului, Sibiu County (128)	330
- <i>Goat Hair Processing Homestead and Workshop</i> , Musculești-Petrești, Gorj County (129)	333
- <i>Floss Silk Processing Homestead and Workshop</i> , Croici-Mătășari, Gorj County (130)	335
- <i>Flax and hemp processing homestead</i> , Lisa, Brașov Country (144)	337
- <i>Hemp Processing and Rope Making Homestead and Workshop</i> , Săsăuș, Sibiu County (143)	340

Group B – Hydraulic Textile Industries

- <i>Fulling Mill with Vertical Beating and Whirlpool</i> , Rod, Sibiu County (132)	342
- <i>Complex of Textile Industries</i> , Gura Râului, Sibiu County (139 A)	344

- <i>Fulling Mill (Dube)</i> , Fânațe, Bihor County (133)	347
- <i>Hydraulic Fulling Mill with Horizontal Beating and Whirlpool</i> , Prigor, Caraș-Severin County (134)	349
- „ <i>Dârsta</i> ” with <i>Mixed Basket and Whirlpool</i> , Moeciu de Sus, Brașov County (138)	351
- „ <i>Dârsta</i> ” with <i>two Ringed Cylinders and two whirlpools</i> , Nistorești, Vrancea County (139)	353
- <i>Fulling Mill with Horizontal Beating and Whirlpool (Admission Through Buttons)</i> , Sichevita, Caraș-Severin County (136)	355
- <i>Crucifix, Crucea din Capul Satului</i> , Rășinari, Sibiu County (79 I)	357
Grupa C. Complex of Hydraulic Installations	
- <i>Complex of Textile Industries (fulling mill, dârstă, whirlpool)</i> , Rucăr, Argeș County (140)	359
- <i>Complex of Traditional Industries</i> , Polovragi, Gorj County (140 A)	361
ETHNO TECHNO PARK	
	364
- <i>Monumental Gate</i> , Vadu Izei, Maramureș County (79 C)	366
- <i>House with Hall</i> , Bârsana, Maramureș County (79 B)	367
- <i>Ethno Techno Park</i>	368
- <i>Special terms related to traditional techniques</i>	371
NON - MATERIAL CULTURAL PATRIMONY	
	375
- „ <i>Living Human Treasures</i> ”	376
- <i>The Association of Romanian Craftsmen</i>	381
- <i>The Galleries of Traditional Art</i>	383
- <i>The Fair of Romania Craftsmen</i>	384
- <i>The National Olympiad „Traditional Craftsmanship”</i>	386
- <i>National Festival of Traditions</i>	388
- <i>International Symposium „Culture - Tradition - Tolerance”</i>	391
- <i>Romanian Academy of Traditional Arts</i>	392
- „ <i>Living Human Treasures</i> ” Exhibition	394
- <i>The European Center for the Promotion of Traditions Through the Values of Non-Material Cultural Patrimony</i>	397
- <i>National Festival of Traditions and Customs</i>	402
- <i>Argument for the national program - „Living Human Treasures” - to save the non-material cultural patrimony</i>	406
ARTISTIC CULTURAL PATRIMONY	
- <i>Modern gallery of monumental sculptures</i>	416
- <i>Bibliography</i>	427
- <i>Map of origin of monuments</i>	439
- <i>Annexes</i>	440